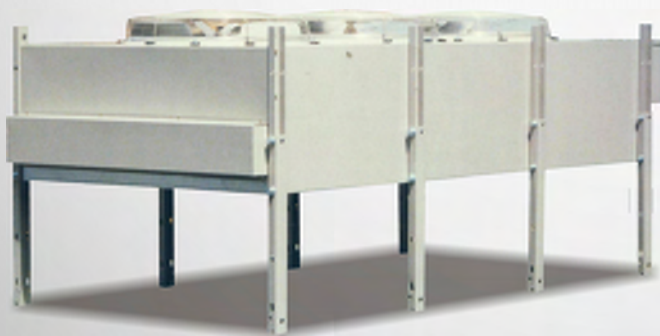




DB-Aire II Systems 50/60Hz

Precision Environmental Control Unit
Cooling Capacity: 2 to 26 TR (7 to 91 kW)



DB-Aire II (Outdoor Unit)



DB-Aire II (Indoor Unit)

R407C

DUNHAM-BUSH

Products that perform...By people who care



DB-AIRE II

Precision Environmental Control Systems For Technological Room Applications

DB-AIRE II AIR-COOLED DX & CHILLED WATER SYSTEMS

Today's technology rooms require precise, stable environments and design in order for sensitive electronics to operate optimally. Precision air conditioning is designed for close temperature and humidity control. It provides high reliability operation with the ease of service, system flexibility and redundancy necessary to keep the electronic equipments up and running 24 hours a day, 365 days a year.

DB-AIRE II another milestone series offers a wide range of capacities in superior compact, stylish black themed attractive furniture grade cabinets in Upflow/ Downflow configuration to provide room-based cooling, control of perfect humidification and air filtration.

GENERAL INFORMATION

DB-Aire II units are precision environmental control systems that bring a new standard of compact, flexibility and reliable performance to the computer room. Because room requirements differ, DB-Aire II offers a wide range of sizes and styles.

DB-AIRE II SYSTEMS

DBAIRE II comes in 2 systems under Air cooled DX and Chilled water system. The nominal capacity range is 2 to 26TR (7 to 91kW) of cooling.

COMPUTER COMFORT

Computer rooms require air which is clean and properly distributed with precisely controlled temperatures and humidity. Building HVAC systems simply are not designed to meet these demands. But, DB-Aire II units easily accomplish these goals with top-rated efficiency, 24 hours per day 7 days a week! DB-Aire II units have been designed to meet the demanding requirements of the most advanced computer room.

Although building HVAC systems cool your staff, they fall short of your computer's comfort need. And they are unable to provide the close humidity control required in a modern data processing centre.

DESIGN FEATURES

- Compact cabinet with anodized aluminum frame, stylish black powder coated panels of 25mm thickness with fiberglass insulation.
- High efficiency single (DBA 02-13) and dual (DBA 14-26) scroll compressors with rotalock connection for ease of service (for Air Cooled DX Systems).

- High-low pressure cutout to protect compressor (for Air Cooled DX Systems).
- Specially built with non screw fixed panels where no special tools required, front access for easier service and maintenance
- TEFC motor with low speed belt driven DIDW centrifugal fan.
- Large faced area evaporator coil with hydrophilic fins.
- Deep pleated disposable filter of MERV8 (Ashrae 52.2). Stainless steel finned tabular type electric heater.
- 3-way modulating valve provides accurate temperature control and dehumidification (for Chilled Water Systems).
- Integrated control system within the unit with panel mounting 4.3" graphical color touch screen for temperature/ humidity/alarm control and monitoring.
- Vision 2020i connectivity to BMS for telemonitoring.
- Electronic Expansion Valve (EEV) for efficient capacity modulation and improve performance (optional).
- Hot gas reheat for Air Cooled DX systems (optional).
- Supply air plenum box for upflow model (optional).
- Steam generator humidifier (optional).
- Floor water detection alarm (optional).
- VFD applied to regulate airflow thus reducing fan input power for energy saving (optional).

HIGH PERFORMANCE LOW COST

DB-Aire II's high-tech, furniture look is clue to its high performance but belies its more than competitive price. Every DB-Aire II unit comes with a commitment to excellence as standard equipment.

TABLE OF CONTENTS

	Page No		Page No
General Information	2	Dual Coils Option	12
Nomenclature	3	Electrical Data	13
DB-Aire II Monitoring/ Control	4	Dimensional Data	15
Network Remote Monitoring (Optional)	6	Remote Air-Cooled Condensers	16
DB-Aire II Design Features	7	Typical Wiring Schematic	17
Performance and Technical Data	8	Guide Specifications	21

NOMENCLATURE

INDOOR UNIT

String	1	2	3	4	5	6	7	8	9	10	11	12	13	14	15	16	17	18	19	20	21	22
	D	B	A	D	0	2	P	A	U	D	B	H	G	S	K	P	S	E	V	N	1	Q

1 & 2 DB-AIRE II

3 SYSTEM
A = Air-Cooled (DX)
C = Chilled Water (CW)
D = Dual Coils (DX+CW)*
R = Air-Cooled DX with Hot Gas Reheat
*Model 26 Dual Coils not available

4 CONFIGURATION
U = Upflow
D = Downflow

5 & 6 MODEL

#	Std Airflow, CFM(m ³ /h)	ESP (in WG)	Motor hp(kW) DX or CW / Dual Coils System
02	1,500 (2,548)	0.3	1.0 (0.75)/1.0 (0.75)
03	1,500 (2,548)	0.3	1.0 (0.75)/1.0 (0.75)
04	2,000 (3,398)	0.3	1.0 (0.75)/ 1.5 (1.1)
05	2,500 (4,247)	0.3	2.0 (1.5)/ 2.0 (1.5)
07	4,000 (6,796)	0.5	2.0 (1.5)/ 2.0 (1.5)
09	5,000 (8,495)	0.5	3.0 (2.2)/ 4.0 (3.0)
11	6,000 (10,194)	0.5	4.0 (3.0)/ 5.5 (4.1)
13	6,500 (11,043)	0.5	5.5 (4.1)/ 5.5 (4.1)
14	8,000 (13,592)	0.5	4.0 (3.0)/ 4.0 (3.0)
16	10,000 (16,989)	0.5	5.5 (4.1)/ 7.5 (5.6)
19	11,000 (18,688)	0.5	7.5 (5.6)/ 7.5 (5.6)
22	11,000 (18,688)	0.5	7.5 (5.6)/ 10.0 (7.5)
26	13,000 (22,086)	0.5	10.0 (7.5)/ Not Applicable

7 REFRIGERANT
P = R407C / Dual Coils System / DX with Hot Gas Reheat
N = R22 for DX, Dual Coils(DX+CW) & DX with Hot Gas Reheat/ Chilled Water Unit

8 & 9 VOLTAGE OPTIONS
AU = 380~415V/3ph/50Hz
AR = 460V/3ph/60Hz
CD = 208V/3ph/60Hz**
AN = 230V/3ph/60Hz**
EF = 380V/3ph/60Hz**
Model 02 and 03 Air-Cooled Units 60Hz option not available.
**Please consult factory for these special voltages. It requires additional cost and longer lead time.

10 DRAIN PAN OPTIONS
D = Standard GI Painted
T = Stainless Steel

11 DISCHARGE PLENUM OPTION (for Upflow model only)
B = Discharge Plenum
N = Not Selected

12 HUMIDIFIER OPTION
H = Humidifier (water conductivity 75 to 350µS/cm)***
N = Not Selected
***Please consult factory for other water conductivity.

22 OTHER SPECIAL OPTION
Q = Special Option
N = Not Selected

21 BMS COMMUNICATION OPTIONS
1 = ModBus RTU RS485****
2 = ModBus TCP/IP
3 = BACnet TCP/IP
4 = BACnet MSTP
5 = BACnet PTP
6 = LONworks
7 = GSM Modem
8 = SNMP
N = Not Selected
**** Standard unit comes with one ModBus RTU RS485 Communication port.

20 FUTURE OPTION
N = Not Selected

19 VFD OPTION
V = VFD
N = Not Selected

18 HEATER OPTION
E = Standard Electric Heater
N = Hot Gas Reheat
(Electric Heater Not Furnished)

17 SMOKE DETECTOR OPTION
S = Smoke Detector
N = Not selected

16 UNDER FLOOR WATER DETECTOR OPTION
P = Pinhole Probe
N = Not selected

15 PANEL INSULATION OPTIONS
K = Double Skin Panel
F = Insulflex Insulation Single Skin Panel
N = Not Selected. Standard Fiberglass Insulation Panel

14 EVAPORATOR CONTROL OPTIONS
N = Standard Thermal Expansion Valve (TXV)
S = Standard Thermal Expansion Valve (TXV) & Liquid Line Solenoid Valve
X = Electronic Expansion Valve (EEV)

13 HOT GAS BYPASS OPTION
G = Hot Gas Bypass
N = Not Selected

Outdoor Unit Nomenclature (for Air Cooled DX-System/ Dual Coils System/ DX-System with Hot Gas Reheat)

String	1	2	3	4	5	6	7	8	9	10	11	12	13
	D	B	R	C	0	4	P	A	U	A	L	1	Q

1,2,3 & 4 AIR COOLED CONDENSER

5 & 6 MODEL
04 *with 220~240V/1ph/50,60Hz
06
08
10
11
13
17
20
26
30
34
40
44

7 REFRIGERANT
P = R22 / R407C

13 OTHER SPECIAL OPTION
Q = Special Option
N = Not selected

12 REFRIGERATION CIRCUIT(S)
1 = 1-Circuit (for standard indoor model 02-13)
2 = 2-Circuits (for standard indoor model 14-26)

11 BLACK PAINT (EXTERNAL) OPTION
L = Black Paint on Unit External
N = Not selected

10 CONDENSER FIN OPTIONS
A = Standard Aluminium
H = Hydrophilic
C = Copper Fin

8 & 9 VOLTAGE OPTIONS
AU = 380~415V/3ph/50Hz
AR = 460V/3ph/60Hz
CD = 208V/3ph/60Hz**
AN = 230V/3ph/60Hz**
EF = 380V/3ph/60Hz**
***Please consult factory for these special voltages. It requires additional cost and longer lead time.

DB-AIRE II MONITORING/ CONTROL



VISION 2020i CONTROLLER

The heart of the Environmental Control System is the microprocessor based DB5 controller, a member of Vision 2020i family. The DB5 controller was developed in compliance with the European RoHS directives. The DB5 controller is designed with 32 bit, 44 MHz CPU, 2+2MB built-in flash memory, and built-in clock with battery as standard. The program and the parameters are saved to FLASH-MEMORY and E²PROM, meaning all data is retained even in the event of power failures (without requiring a backup battery). DB5 controller offers various add-on cards which allow supervisory communication to be so easy by just inserting an add-on card into DB5 controller.

DBG5 TOUCH SCREEN DISPLAY

The new DB-AIRE II is equipped with a 4.3" DBG5 color touch screen display as standard display panel. The color touch screen display has graphical resolution of 480 x 272 pixels, 65k colors with LED backlight. This means the display panel will perform high quality images and advanced functions are available for a superior appearance. DBG5 display panel not only monitors your data center's temperature, humidity, airflow, and cleanliness, but also provides component run times, alarm history and an automatic self-test of the microprocessor on system start-up. Multiple messages will be displayed by automatically scrolling from each message to the next. All of these messages are spelled out in English language on the touch screen color display. Multiple alarms will be displayed sequentially in order of occurrence.

OPERATION

DBG5 touch screen panel makes interaction between the user and the unit much easier by simplifying navigation between the various screens. Touch keypad on the DBG5 panel allows unit on/off operation, menu selection, operational information, diagnostics, historical data and trend graph. Multi-level authorization password feature prevents unauthorized access. Another feature is that all menu programmed information for basic system operation and alarm parameters is stored in a non-volatile EEPROM and FLASH-MEMORY where backup battery is not required.

PROGRAMMABLE FUNCTIONS/ MONITORING

The user friendly touch screen color display permits step-by-step programming and display of the following functions:

- Temperature Set Point 10 to 50°C (50°F- 122°F)
- Temperature Sensitivity 0.5 to 2.7°C (1°F- 5 °F)
- Humidity Set Point (40% - 70% RH)
- Humidity Sensitivity (1% - 10% RH)
- Temperature Alarm Set points
- Humidity Alarm Set points
- Unit Start Time Delay

Normal functions are monitored and displayed on the display panel and include, in addition to the above set points, the following:

- Current Temperature (deg C or deg F)
- Current Humidity (%RH)
- Cooling Stages 1, 2 as applicable
- Heating Stages 1, 2, 3
- Humidification
- Dehumidification

ALARMS

Alarm conditions are also monitored on the display panel and are enunciated by an audible alarm. The alarm silence button will quiet the audible alarm but the display will continue to indicate the alarm condition until the problem is corrected.

The following alarms are standard:

- Compressor High/Low Pressure
- High and Low Temperature
- High And Low Humidity
- No Airflow
- Filters Blocked
- Humidifier Failure
- Power Failure Restart
- Compressor Short Cycle
- Temperature Sensor Error
- Humidity Sensor Error
- Local Alarm Customer Input Alarm
- Maintenance Due

With add-on optional sensors, the following alarm status can be monitored:

- Under the floor water detection
- No water flow
- Smoke alarm and etc.

In addition, incomparable control settings will be identified on the display panel.

HISTORICAL DATA

In order to facilitate maintenance and service, component run times for fan motor, compressor operation, reheat stages, humidification and dehumidification can be recalled and displayed on the DBG5 display panel. The current temperature and humidity, with the minimum and maximum readings for the last 24 hours of operation, can be recalled and displayed. The last ten alarms and hours since occurrence can also be recalled and displayed. The historical data base is stored in FLASH-MEMORY which does not require backup battery in the event of power failure.

DIAGNOSTICS

Automatic and manual diagnostic sequences simplify troubleshooting.

DB-AIRE II MONITORING/ CONTROL

PROGRAMMING KEY

The programming keys for the Vision 2020i controllers provide easy software updates during both end-of production testing and maintenance procedures.



VISION 2020i COMMUNICATION INTERFACES (Optional)

Below are the available communication interface features of the DB5 controller:

1.) BMS interface

MODBUS RS485 Serial Card

Optional Modbus RS485 add-on card allows Vision 2020i Controller to interface to Modbus Slave, RTU mode, RS485 network. The maximum baud rate is 19200 and it is set via software.



DB1 LONWORKS FTT10 Card

The optional Lonworks serial card allows Vision 2020i controller to interface to LonWorks® network FTT-10A 78 kbs (TP/FT-10).



2.) BACnet Gateway

BACnet Gateway allows Vision 2020i controllers (maximum number: 8) to interface with BACnet. This is a frequently used protocol and a property of many BMS manufacturers. This device makes automatically the translation of the Vision 2020i controller transmission protocol into the communication protocol BACnet.

The connections available on the Gateway are:

- serial 232 (protocol PTP) towards the BACnet;
- serial 422 or 485 towards Vision 2020i peripherals;
- serial 232 for the Gateway configuration



3.) WebGate

WebGate is an electronic device to interface all Vision 2020i controllers (maximum 16 units) on a RS485 network to any local 10 Mbps Ethernet network.

Contact the network administrator or other responsible person to arrange a network connection to the WebGate.

The following functions are therefore possible:

- Access information (such as network variables and parameters) from each controller using a



standard web browser, such as Internet Explorer™ (version 5 or higher) or NetScape Communicator™ (version 6 or higher) on any PC connected to the WebGate in a local network or WAN. For the better results use a browser supporting CSS style sheets.

- Pass data to a supervising PC connected to the network using the SNMP standard protocol.

Standard Internetworking Protocols: SNMP v1, HTTP, FTP Memory: 128KB RAM, 1MB Flash (400KB available for web pages and user data).

Interfaces: Serial RS485, Serial RS232 DTE interface and Ethernet interface RJ-45 connector.

4.) DB-Web

The optional DB-Web board is used to interface all of the Vision 2020i series controllers to a 10 Mbps Ethernet network and consequently perform the following functions:

- access the information on the controller (network variables and parameters) using an Internet browser, such as Internet Explorer™ installed on a PC and connected to the DB-Web via TCP/IP.

- connection to a supervisory network that uses one of the following standard protocols:

- SNMP v1 & v2c
- BACnet Ethernet ISO8802-2/8802-3
- BACnet/IP

- DB-Web is supplied with the DHCP function already active. Therefore, in a network served by a DHCP server, DB-Web will automatically acquire the necessary parameters without requiring configuration, while, in the case of a network without DHCP, the parameters need to be configured manually.

Ethernet interface: RJ45 connector for Ethernet 10BaseT; use a class 5 shielded cable, max 100 meters. Protocols managed: HTTP, FTP, SNMP v1, v2c, DHCP, DNS, BACnet Ethernet ISO8802-2/8802-3, BACnet/IP.

There are two types of interfaces for DB-Web:

ETHERNET interface for:

- BACnet Ethernet
- BACnet over IP
- SNMP v1, v2.c, v3
- HTTP (web server)
- FTP, DHCP, DNS
- Modbus TCP/IP



EIA 485 interface for:

- BACnet MS/TP



5.) SNMP

SNMP (Simple Network Management Protocol) is a protocol for the management of TCP/IP networks (the Internet protocol), established in 1988 based on the specifications of the IAB (Internet Administration Board), the body that supervises the internet protocol.

All Vision 2020i controllers can be connected Web Gate or DB-Web to a 10 Mbps Ethernet™ network via gateway or DB-web, and communicate with systems that use the SNMP Protocol.

DB-AIRE II MONITORING/ CONTROL

6.) SMS, short message service (with GSM Modem)

Dunham-Bush has pay great attention to fitting the Vision 2020i controllers with the ability to communicate important information directly by SMS message.

In fact, this is the best communication system for sending data wherever and promptly.

By simply connecting a GSM modem, the DB5 controllers not limited to send alarms and information only, but also receive commands via

SMS that service personnel can use to reset any alarm or perform the necessary operations, without having to travel to the installation.

7.) TREND



Trend is a building Automation System verywidespread in the Anglo-Saxon countries and in general in Europe.

The DB5 controller is TREND compatible, through the proper serial card. TREND deals with the configuration and the supply of the interface card.

NETWORK REMOTE MONITORING (OPTIONAL)

NETWATCH PRO

For smaller systems with the same management and control requirements as larger installations, NetWatchPRO offers the complete and integrated solution for all monitoring and remote management needs.

Complete network and alarm configuration, simple navigation and an attractive design are some of the features that make NetWatchPRO the cutting edge product in its category. A color LCD touch screen, and the use of practical menus, guide the user simply and intuitively, without the use of a PC (however a PC can be connected if necessary), thus providing a practical solution for all those environments that do not have room for a computer.

Other innovative features of NetWatchPRO include:

- Possibility to connect and control up to 100 units DB-AIRE II on RS485 bus;
- Record up to a maximum of 100 variables;
- Log data for up to one year (with 15 min sampling).
- 3 output relays, for alarm signals;
- Possibility to export data (alarms, events, system and model configurations and variable reports) using a USB memory key (the data are downloaded in a format that is compatible with Microsoft® Excel and Microsoft® Word);
- Display graphs;
- Complete alarm configuration;
- Phone book for SMS contacts, fax numbers, e-mail addresses (with optional accessories);
- Possibility for multiple users to access the system, with different privileges (administrator, normal user, user with privileges);



- Instrument suitable for technical environments, no moving parts.

NETVISOR PRO

NetVisor is the Dunham-Bush web-server based monitoring and tele-maintenance system server that features flexibility of use and easy access to information and alarm management functions.

Dunham-Bush has responded to the requirements for local monitoring and remote management by supplying solutions at all levels: from controllers in the field to supervisory systems.

In this way, the user can be constantly kept up-to-date on the status of the installation. Tailor-made tele-maintenance solutions!

The solutions proposed by Dunham-Bush differ according to the type of installation:

- NetVisor PRO Basic, a pc-based solution for local and remote monitoring system. it can monitor up to 90 units of instruments and log 1400 variables. this solution includes a computer system unit but excludes keyboard, mouse and monitor.
- NetVisor PRO Touch Hyper is a complete solution for local and remote monitoring system that can monitor up to 300 units of instruments and log up to 3500 variables. This solution includes a computer system unit with touch screen.
 - 1.) NetVisor PRO can be accessed within a LAN Network, the information from the NetVisor PRO computer can be accessed by other PCs on the same network via Internet Explorer. NetVisor PRO can also be published on the web if a permanent internet connection and static IP is available.
 - 2.) NetVisor PRO has equipped with 2 digital inputs (5V max) and 3 relay (24V max) outputs, the relay contacts can be scheduled to provide control over equipments or in response to alarm or events.

DB-AIRE II DESIGN FEATURES

FRAME AND CABINET

The cabinet comprises an anodized aluminium frame of epoxy powder coated black color paint with nylon corners and removable steel sheet panels. All panels shall be externally installed onto the cabinet by using special stopper system without using screws. The stopper system shall also facilitate the removable of panels for additional ease of field installation, service and maintenance on the system. All panels and access doors shall be fabricated from sturdy heavy gauge of 1.0mm steel sheets with epoxy powder coated oven baked black color paint to provide a durable finish. All panels shall be of 25mm (1 inch) thick single skin and lined with minimum 2lbs/ft³ density thermal and acoustical fiberglass insulation with fire resistant of Class O (BS 476 Part 6, 7). The system shall be designed for front access only with hinged and lock type full height doors.



COOLING COIL



Computer selected coil design, using interwoven coil surface increases unit efficiency at low loads. Air is drawn through the coil at low velocity providing effective surface exposure with minimum turbulence. This provides greater efficiency in the cooling and dehumidification process.

FAN SECTION

Blowers shall be belt driven double-inlet-double-width (DIDW), statically and dynamically balanced with multiple forward curved blades mounted on a solid steel keyed shaft. Heavy-duty V-belt fan drive (sized for 200% safety factor) with cast iron pulleys keyed and secured to the blower shaft shall be provided.



FILTERS



The system shall be provided with 2 inches (50mm) deep (for model 02-05) or 4 inches (100mm) deep (for model 07-26) extended surface pleated disposable type filters rated for MERV8 efficiency to ASHRAE 52.2 standard (equivalent to EU4). Filters shall be withdrawable from the front of the unit.

ELECTRICAL REHEAT

The three stage stainless steel finned tubular reheat coils provide ample capacity to maintain room dry bulb conditions during a system call for dehumidification. Three equal stages give a more accurate controlled response to the requirements of the computer room. The heating elements are protected by thermal safety switches. The three stages of reheat create a noticeable lowering of energy use.

HOT GAS REHEAT (OPTIONAL)

The unit shall incorporate a hot gas reheat coil located downstream of the evaporator coil with modulating valve which is completely integrated to the unit's microprocessor control. For units with two refrigerant circuits, each circuit shall operate independently with its own modulating valve.

HUMIDIFICATION (OPTIONAL)

The disposable cartridge electric steam generator humidifier provides humidification down stream of the cooling coil. The humidifier is designed to allow all units at any voltage to produce full rated steam output at an optimum low water level.

ELECTRONIC EXPANSION VALVE (EEV) (OPTIONAL)

The refrigerant circuit(s) shall be provided with an Electronic Expansion Valve (EEV) for evaporator in lieu of standard Thermal Expansion Valve (TXV) to allow an efficient modulation control of refrigeration and consistent energy saving performances.

DB-AIRE II HUMID INTERFACE

The DB-Aire II Humid interface allows the control of humidifiers directly from the DB-Aire II microprocessor controller.

COMPRESSORIZED SYSTEMS

The refrigeration system uses highly efficient and quiet scroll compressors. The scroll compressor has a high EER, low sound power level and is highly reliable. The high efficiency is due to the controlled orbit with floating seals and advanced scroll geometry design. There is no contact of the mechanical parts in the scroll design which eliminates mechanical wear and tear. The motor is 100% cooled by suction gas. A check valve is located directly above the fixed scroll discharge port. This prevents the compressor from running backwards after the power has been switched off (i.e. no rattling and no shut-down noise). The motor is fitted with a thermostat which protects the compressor if a malfunction occurs. The refrigeration circuit includes built in compressor overload protection, filter drier, sight glass, adjustable expansion valve, low pressure override timer, manual reset high pressure control, short-cycle timer and rotalock service valves.



AIR COOLED SYSTEMS

A wide range of sizes of remote mounted air cooled condensers are available from DB-Aire II in vertical discharge.

Condensers are manufactured by DB-Aire II and include circuits sized to match the heat rejection of the corresponding compressors. The industrial duty design includes galvanised corrosion resistant housings, high efficiency aluminium finned (optional copper fins available), copper tube coils; coated fan guards, energy efficient thermally protected motors; and integral factory wired and tested control panel.



PERFORMANCE AND TECHNICAL DATA

AIR COOLED DX SYSTEM @ 35°C (95°F) AMBIENT TEMPERATURE - WITH OR WITHOUT HOT GAS REHEAT

Model			DBAD/U 02 DBRD/U 02	DBAD/U 03 DBRD/U 03	DBAD/U 04 DBRD/U 04	DBAD/U 05 DBRD/U 05	DBAD/U 07 DBRD/U 07	DBAD/U 09 DBRD/U 09
Return Air 80°F/67°F/50% RH (27°C/19°C/50% RH)	Total Cooling Capacity	MBH (kW)	41.0 (12.0)	42.9 (12.6)	51.3 (15.0)	63.8 (18.7)	89.6 (26.3)	131.7 (38.6)
	Sensible Cooling Capacity	MBH (kW)	32.2 (9.4)	35.7 (10.5)	44.3 (13.0)	54.7 (16.0)	77.9 (22.8)	111.7 (32.7)
	Sensible Heat Ratio (SHR)		0.79	0.83	0.86	0.86	0.87	0.85
Return Air 75°F/62.5°F/50% RH (24°C/17°C/50% RH)	Total Cooling Capacity	MBH (kW)	34.7 (10.2)	38.8 (11.4)	49.7 (14.6)	58.2 (17.1)	80.9 (23.7)	119.3 (35.0)
	Sensible Cooling Capacity	MBH (kW)	30.7 (9.0)	35.1 (10.3)	44.8 (13.1)	53.8 (15.8)	75.6 (22.1)	109.8 (32.2)
	Sensible Heat Ratio (SHR)		0.90	0.90	0.90	0.93	0.93	0.92
Return Air 72°F/60°F/50% RH (22°C/16°C/50% RH)	Total Cooling Capacity	MBH (kW)	32.7 (9.6)	36.3 (10.6)	46.5 (13.6)	54.6 (16.0)	80.2 (23.5)	118.3 (34.7)
	Sensible Cooling Capacity	MBH (kW)	30.0 (8.8)	33.7 (9.9)	43.8 (12.8)	52.6 (15.4)	75.3 (22.1)	108.8 (31.9)
	Sensible Heat Ratio (SHR)		0.92	0.93	0.94	0.96	0.94	0.92
Compressor	Number of Compressor(s)		1	1	1	1	1	1
	Total Power Input (50Hz)	kW	3.4	3.4	4.7	5.2	6.5	10.2
	Total Power Input (60Hz)	kW	N/A	N/A	4.4	5.4	6.6	11.2
	Hot Gas; Liquid Lines, 50Hz	Inch	5/8 ; 1/2	5/8 ; 1/2	5/8 ; 1/2	5/8 ; 1/2	7/8 ; 1/2	7/8 ; 5/8
	Hot Gas; Liquid Lines, 60Hz	Inch	N/A	N/A	5/8 ; 1/2	5/8 ; 1/2	7/8 ; 1/2	7/8 ; 1/2
Fan & Motor (Indoor)	Fan Size		10/8	10/8	10/8	10/8	15/15	15/15
	Air Volume	CFM (m ³ /h)	1,500 (2,548)	1,500 (2,548)	2,000 (3,398)	2,500 (4,247)	4,000 (6,796)	5,000 (8,495)
	External Static Pressure (ESP)	in H ₂ O (Pa)	0.3 (75)	0.3 (75)	0.3 (75)	0.3 (75)	0.5 (125)	0.5 (125)
	Motor (Standard Single Coil)	Hp (kW)	1.0 (0.75)	1.0 (0.75)	1.0 (0.75)	2.0 (1.5)	2.0 (1.5)	3.0 (2.2)
Coil (DX)	Face Area	ft ² (m ²)	5.6 (0.5)	5.6 (0.5)	5.6 (0.5)	5.6 (0.5)	12.2 (1.1)	12.2 (1.1)
	Face Velocity	FPM (m/s)	270 (1.4)	270 (1.4)	360 (1.8)	450 (2.3)	327 (1.7)	409 (2.1)
	Condensate Drain O.D	Inch	7/8	7/8	7/8	7/8	7/8	7/8
Filters (ASHRAE 52.5 MERV 8)	20" x 20" x 2"	Qty	2	2	2	2	N/A	N/A
	20" x 20" x 4"	Qty	N/A	N/A	N/A	N/A	4	4
	20" x 25" x 4"	Qty	N/A	N/A	N/A	N/A	N/A	N/A
Reheat (Electric) N/A for DBRD/U Models	3-Stages (rated at 415V)	MBH (kW)	20.5 (6.0)	20.5 (6.0)	20.5 (6.0)	20.5 (6.0)	41.0 (12.0)	41.0 (12.0)
Steam Humidifier (Optional)	Capacity (max.)	lbs/hr (kg/hr)	17 (8.0)	17 (8.0)	17 (8.0)	17 (8.0)	17 (8.0)	17 (8.0)
	Power Input (max.)	kW	6.0	6.0	6.0	6.0	6.0	6.0
Sound Pressure Level (at 2m distance, free field, downflow)		dBA	56	56	57	57	62	63

PHYSICAL DATA

Height	H	mm (inch)	1944 (76.5)	1944 (76.5)	1944 (76.5)	1944 (76.5)	1944 (76.5)	1944 (76.5)
Width	W	mm (inch)	749 (29.5)	749 (29.5)	749 (29.5)	749 (29.5)	1464 (57.6)	1464 (57.6)
Depth	D	mm (inch)	874 (34.4)	874 (34.4)	874 (34.4)	874 (34.4)	874 (34.4)	874 (34.4)
Weight	DBAD/U	kg (lbs)	251 (552)	259 (570)	260 (572)	272 (598)	420 (924)	450 (990)
	DBRD/U	kg (lbs)	265 (583)	273 (601)	274 (603)	286 (629)	442 (972)	472 (1038)

Notes: 1.) Add 457mm (18inch) to height of unit for Discharge Plenum (optional) – Upflow Models only
2.) Add 32kg (71lbs)- Model 02 to 05; 51kg(112 lbs)-Model 07 to 13; 80kg(176 lbs)- Model 14 to 26 to weight of unit for Discharge Plenum (optional)- Upflow Model only



PERFORMANCE AND TECHNICAL DATA

AIR COOLED DX SYSTEM @ 35°C (95°F) AMBIENT TEMPERATURE - WITH OR WITHOUT HOT GAS REHEAT

Model			DBAD/U 11 DBRD/U 11	DBAD/U 13 DBRD/U 13	DBAD/U 14 DBRD/U 14	DBAD/U 16 DBRD/U 16	DBAD/U 19 DBRD/U 19	DBAD/U 22 DBRD/U 22	DBAD/U 26 DBRD/U 26
Return Air 80°F/67°F/50% RH (27°C/19°C/50% RH)	Total Cooling Capacity	MBH (kW)	145.7 (42.7)	170.4 (49.9)	190.1 (55.7)	224.3 (65.7)	260.7 (76.4)	288.5 (84.5)	337.3 (98.8)
	Sensible Cooling Capacity	MBH (kW)	128.7 (37.7)	145.9 (42.8)	158.3 (46.4)	190.9 (55.9)	226.1 (66.2)	244.3 (71.6)	286.0 (83.8)
	Sensible Heat Ratio (SHR)		0.88	0.86	0.83	0.85	0.87	0.85	0.85
Return Air 75°F/62.5°F/50% RH (24°C/17°C/50% RH)	Total Cooling Capacity	MBH (kW)	132.5 (38.8)	154.8 (45.4)	182.0 (53.3)	203.1 (59.5)	236.1 (69.2)	262.2 (76.8)	307.4 (90.1)
	Sensible Cooling Capacity	MBH (kW)	124.7 (36.5)	143.3 (42.0)	161.2 (47.2)	185.2 (54.3)	222.7 (65.3)	240.0 (70.3)	276.8 (81.1)
	Sensible Heat Ratio (SHR)		0.94	0.93	0.90	0.91	0.94	0.92	0.90
Return Air 72°F/60°F/50% RH (22°C/16°C/50% RH)	Total Cooling Capacity	MBH (kW)	131.5 (38.5)	145.2 (42.5)	170.2 (49.9)	201.2 (59.0)	234.7 (68.8)	260.1 (76.2)	304.4 (89.2)
	Sensible Cooling Capacity	MBH (kW)	125.5 (36.8)	140.0 (41.0)	155.2 (45.5)	184.5 (54.1)	221.2 (64.8)	237.9 (69.7)	278.6 (81.6)
	Sensible Heat Ratio (SHR)		0.95	0.96	0.91	0.92	0.94	0.91	0.92
Compressor	Number of Compressor(s)		1	1	2	2	2	2	2
	Total Power Input (50Hz)	kW	11.1	12.7	14.7	17.1	20.3	21.8	26.1
	Total Power Input (60Hz)	kW	12.3	13.0	16.3	17.9	22.2	24.2	26.9
	Hot Gas; Liquid Lines, 50Hz	Inch	7/8; 5/8	7/8; 5/8	7/8(2); 1/2(2)	7/8(2); 1/2(2)	7/8(2); 5/8(2)	7/8(2); 5/8(2)	7/8(2); 5/8(2)
	Hot Gas; Liquid Lines, 60Hz	Inch	7/8; 5/8	7/8; 5/8	7/8(2); 1/2(2)	7/8(2); 1/2(2)	7/8(2); 5/8(2)	7/8(2); 5/8(2)	7/8(2); 5/8(2)
Fan & Motor (Indoor)	Fan Size		15/15	15/15	15/15 (Twin)	15/15 (Twin)	15/15 (Twin)	15/15 (Twin)	15/15 (Twin)
	Air Volume	CFM (m ³ /h)	6,000 (10,194)	6,500 (11,043)	8,000 (13,592)	10,000 (16,989)	11,000 (18,688)	11,000 (18,688)	13,000 (22,086)
	External Static Pressure (ESP)	in H ₂ O (Pa)	0.5 (125)	0.5 (125)	0.5 (125)	0.5 (125)	0.5 (125)	0.5 (125)	0.5 (125)
	Motor (Standard Single Coil)	Hp (kW)	4.0 (3.0)	5.5 (4.0)	4.0 (3.0)	5.5 (4.0)	7.5 (5.5)	7.5 (5.5)	10.0 (7.5)
Coil (DX)	Face Area	ft ² (m ²)	12.2 (1.1)	12.2 (1.1)	23.9 (2.2)	23.9 (2.2)	23.9 (2.2)	23.9 (2.2)	23.9 (2.2)
	Face Velocity	FPM (m/s)	491 (2.5)	532 (2.7)	335 (1.7)	419 (2.1)	461 (2.3)	461 (2.3)	544 (2.8)
	Condensate Drain O.D	Inch	7/8	7/8	7/8	7/8	7/8	7/8	7/8
Filters (ASHRAE 52.5 MERV 8)	20" x 20" x 2"	Qty	N/A	N/A	N/A	N/A	N/A	N/A	N/A
	20" x 20" x 4"	Qty	4	4	6	6	6	6	6
	20" x 25" x 4"	Qty	N/A	N/A	2	2	2	2	2
Reheat (Electric) N/A for DBRD/U Models	3-Stages (rated at 415V)	MBH (kW)	41.0 (12.0)	41.0 (12.0)	61.4 (18.0)	61.4 (18.0)	61.4 (18.0)	61.4 (18.0)	61.4 (18.0)
Steam Humidifier (Optional)	Capacity (max.)	lbs/hr (kg/hr)	17 (8.0)	17 (8.0)	33 (15.0)	33 (15.0)	33 (15.0)	33 (15.0)	33 (15.0)
	Power Input (max.)	kW	6.0	6.0	11.3	11.3	11.3	11.3	11.3
Sound Pressure Level (at 2m distance, free field, downflow)		dBA	66	70	65	65	66	69	73

PHYSICAL DATA

Height	H	mm (inch)	1944 (76.5)	1944 (76.5)	1944 (76.5)	1944 (76.5)	1944 (76.5)	1944 (76.5)	1944 (76.5)
Width	W	mm (inch)	1464 (57.6)	1464 (57.6)	2554 (100.6)	2554 (100.6)	2554 (100.6)	2554 (100.6)	2554 (100.6)
Depth	D	mm (inch)	874 (34.4)	874 (34.4)	874 (34.4)	874 (34.4)	874 (34.4)	874 (34.4)	874 (34.4)
Weight	DBAD/U	kg (lbs)	460 (1,012)	474 (1,043)	735 (1,617)	754 (1,659)	802 (1,764)	823 (1,811)	835 (1,837)
	DBRD/U	kg (lbs)	482 (1,060)	496 (1,091)	776 (1,707)	795 (1,659)	843 (1,765)	864 (1,901)	876 (1,927)

Notes: 1.) Add 457mm (18inch) to height of unit for Discharge Plenum (optional) – Upflow Models only

2.) Add 32kg (71lbs)- Model 02 to 05; 51kg(112 lbs)-Model 07 to 13; 80kg(176 lbs)- Model 14 to 26 to weight of unit for Discharge Plenum (optional)- Upflow Model only



PERFORMANCE AND TECHNICAL DATA

CHILLED WATER SYSTEM @ WATER SUPPLY/ RETURN 7°C/ 12°C (44.6°F/ 53.6°F)

Model			DBCD/U 02	DBCD/U 03	DBCD/U 04	DBCD/U 05	DBCD/U 07	DBCD/U 09
Return Air 80°F/67°F/50% RH (27°C/19°C/50% RH)	Total Cooling Capacity	MBH (kW)	45.7 (13.4)	62.2 (18.2)	81.4 (23.8)	95.8 (28.1)	147.2 (43.1)	186.5 (54.6)
	Sensible Cooling Capacity	MBH (kW)	34.9 (10.2)	44.2 (12.9)	59.3 (17.4)	71.1 (20.8)	109.3 (32.0)	138.6 (40.6)
	Sensible Heat Ratio (SHR)		0.76	0.71	0.73	0.74	0.74	0.74
	Water Flow Rate	GPM (m ³ /hr)	10.5 (2.4)	14.3 (3.2)	18.7 (4.2)	22.0 (5.0)	33.8 (7.7)	41.9 (9.5)
	Water Pressure Drop	PSI (kPa)	4.2 (29.3)	10.4 (71.4)	3.7 (25.7)	4.9 (34.1)	5.0 (34.7)	18.3 (125.8)
Return Air 75°F/62.5°F/50% RH (24°C/17°C/50% RH)	Total Cooling Capacity	MBH (kW)	31.8 (9.3)	43.0 (12.6)	57.5 (16.9)	67.9 (19.9)	103.8 (30.4)	132.3 (38.8)
	Sensible Cooling Capacity	MBH (kW)	29.9 (8.8)	37.1 (10.9)	50.5 (14.8)	61.0 (17.9)	93.2 (27.3)	118.6 (34.8)
	Sensible Heat Ratio (SHR)		0.94	0.86	0.88	0.90	0.90	0.90
	Water Flow Rate	GPM (m ³ /hr)	7.3 (1.7)	9.9 (2.2)	13.2 (3.0)	15.6 (3.5)	23.8 (5.4)	29.7 (6.7)
	Water Pressure Drop	PSI (kPa)	2.3 (15.8)	5.5 (38.0)	2.1 (14.3)	2.7 (18.8)	2.7 (18.8)	10.1 (69.6)
Return Air 72°F/60°F/50% RH (22°C/16°C/50% RH)	Total Cooling Capacity	MBH (kW)	26.8 (7.9)	35.9 (10.5)	48.1 (14.1)	57.0 (16.7)	86.9 (25.5)	108.9 (31.9)
	Sensible Cooling Capacity	MBH (kW)	26.4 (7.7)	32.5 (9.5)	44.4 (13.0)	53.8 (15.8)	82.0 (24.0)	107.8 (31.6)
	Sensible Heat Ratio (SHR)		0.99	0.91	0.92	0.94	0.94	0.99
	Water Flow Rate	GPM (m ³ /hr)	6.0 (1.4)	8.0 (1.8)	10.7 (2.4)	12.7 (2.9)	19.3 (4.4)	24.2 (5.5)
	Water Pressure Drop	PSI (kPa)	1.6 (11.1)	3.9 (26.6)	1.4 (9.9)	1.9 (13.2)	1.9 (13.2)	7.1 (49.0)
Fan & Motor (Indoor)	Fan Size		10/8	10/8	10/8	10/8	15/15	15/15
	Air Volume	CFM (m ³ /h)	1,500 (2,548)	1,500 (2,548)	2,000 (3,398)	2,500 (4,247)	4,000 (6,796)	5,000 (8,495)
	External Static Pressure (ESP)	in H ₂ O (Pa)	0.3 (75)	0.3 (75)	0.3 (75)	0.3 (75)	0.5 (125)	0.5 (125)
	Motor	Hp (kW)	1.0 (0.75)	1.0 (0.75)	1.0 (0.75)	2.0 (1.5)	2.0 (1.5)	3.0 (2.2)
Coil (Chilled Water)	Face Area	ft ² (m ²)	5.6 (0.5)	5.6 (0.5)	5.6 (0.5)	5.6 (0.5)	12.2 (1.1)	12.2 (1.1)
	Face Velocity	FPM (m/s)	270 (1.4)	270 (1.4)	360 (1.8)	450 (2.3)	327 (1.7)	409 (2.1)
	Condensate Drain O.D	Inch	7/8	7/8	7/8	7/8	7/8	7/8
Chilled Water Control	3-Way Modulating Valve, Size	DN, mm	25	25	25	25	25	25
		Kv, m ³ /h	10	10	10	10	10	10
Filters (ASHRAE 52.5 MERV 8)	20" x 20" x 2"	Qty	2	2	2	2	N/A	N/A
	20" x 20" x 4"	Qty	N/A	N/A	N/A	N/A	4	4
	20" x 25" x 4"	Qty	N/A	N/A	N/A	N/A	N/A	N/A
Reheat (Electric)	3-Stages (rated at 415V)	MBH (kW)	20.5 (6.0)	20.5 (6.0)	20.5 (6.0)	20.5 (6.0)	41.0 (12.0)	41.0 (12.0)
Steam Humidifier (Optional)	Capacity (max.)	lbs/hr (kg/hr)	17 (8.0)	17 (8.0)	17 (8.0)	17 (8.0)	17 (8.0)	17 (8.0)
	Power Input (max.)	kW	6.0	6.0	6.0	6.0	6.0	6.0
Sound Pressure Level (at 2m distance, free field, downflow)		dBA	48	50	52	55	52	53

PHYSICAL DATA

Height	H	mm (inch)	1944 (76.5)	1944 (76.5)	1944 (76.5)	1944 (76.5)	1944 (76.5)	1944 (76.5)
Width	W	mm (inch)	749 (29.5)	749 (29.5)	749 (29.5)	749 (29.5)	1464 (57.6)	1464 (57.6)
Depth	D	mm (inch)	874 (34.4)	874 (34.4)	874 (34.4)	874 (34.4)	874 (34.4)	874 (34.4)
Weight		kg (lbs)	205 (451)	212 (466)	219 (482)	229 (504)	365 (803)	374 (823)

Note: 1.) Add 457mm (18 inch) to height of unit for Discharge Plenum (optional) – Upflow Models only

2.) Add 32kg (71lbs)- Model 02 to 05; 51kg(112 lbs)- Model 07 to 13; 80kg(176 lbs)- Model 14 to 26 to weight of unit for Discharge Plenum (optional)- Upflow Model only



PERFORMANCE AND TECHNICAL DATA

CHILLED WATER SYSTEM @ WATER SUPPLY/ RETURN 7°C/ 12°C (44.6°F/ 53.6°F)

Model			DBCD/U 11	DBCD/U 13	DBCD/U 14	DBCD/U 16	DBCD/U 19	DBCD/U 22	DBCD/U 26
Return Air 80°F/67°F/50% RH (27°C/19°C/50% RH)	Total Cooling Capacity	MBH (kW)	228.1 (66.8)	252.1 (73.9)	291.5 (85.4)	340.7 (99.8)	396.9 (116.3)	447.5 (131.1)	505.1 (148.0)
	Sensible Cooling Capacity	MBH (kW)	169.6 (49.7)	185.3 (54.3)	216.8 (63.5)	258.8 (75.8)	297.9 (87.3)	324.0 (94.9)	370.8 (108.6)
	Sensible Heat Ratio (SHR)		0.74	0.74	0.74	0.76	0.75	0.72	0.73
	Water Flow Rate	GPM (m ³ /hr)	52.3 (11.9)	57.8 (13.1)	66.8 (15.2)	78.1 (17.7)	91.0 (20.7)	102.6 (23.3)	115.8 (26.3)
	Water Pressure Drop	PSI (kPa)	7.5 (51.7)	15.0 (103.4)	4.2 (28.7)	5.5 (37.7)	4.9 (34.1)	11.7 (81.0)	14.5 (99.8)
Return Air 75°F/62.5°F/50% RH (24°C/17°C/50% RH)	Total Cooling Capacity	MBH (kW)	162.0 (47.5)	179.7 (52.7)	205.3 (60.2)	240.5 (70.5)	280.9 (82.3)	319.0 (93.5)	360.4 (105.6)
	Sensible Cooling Capacity	MBH (kW)	145.3 (42.6)	158.9 (46.6)	184.9 (54.2)	221.9 (65.0)	255.5 (74.9)	277.1 (81.2)	318.1 (93.2)
	Sensible Heat Ratio (SHR)		0.90	0.88	0.90	0.92	0.91	0.87	0.88
	Water Flow Rate	GPM (m ³ /hr)	37.2 (8.4)	41.2 (9.4)	47.1 (10.7)	55.1 (12.5)	64.4 (14.6)	73.2 (16.6)	82.7 (18.8)
	Water Pressure Drop	PSI (kPa)	4.1 (28.4)	8.4 (57.7)	2.3 (15.5)	3.0 (20.6)	2.7 (18.5)	6.5 (45.1)	8.1 (55.6)
Return Air 72°F/60°F/50% RH (22°C/16°C/50% RH)	Total Cooling Capacity	MBH (kW)	136.1 (39.9)	151.1 (44.3)	172.2 (50.5)	202.5 (59.3)	236.4 (69.3)	267.6 (78.4)	303.1 (88.8)
	Sensible Cooling Capacity	MBH (kW)	128.4 (37.6)	140.2 (41.1)	163.4 (47.9)	196.3 (57.5)	225.8 (66.2)	243.6 (71.4)	280.0 (82.0)
	Sensible Heat Ratio (SHR)		0.94	0.93	0.95	0.97	0.96	0.91	0.92
	Water Flow Rate	GPM (m ³ /hr)	30.3 (6.9)	33.6 (7.6)	38.3 (8.7)	45.1 (10.2)	52.6 (11.9)	59.5 (13.5)	67.4 (15.3)
	Water Pressure Drop	PSI (kPa)	2.9 (19.7)	5.9 (40.7)	1.6 (11.1)	2.1 (14.3)	1.9 (12.9)	4.6 (31.7)	5.7 (39.2)
Fan & Motor (Indoor)	Fan Size		15/15	15/15	15/15 (Twin)	15/15 (Twin)	15/15 (Twin)	15/15 (Twin)	15/15 (Twin)
	Air Volume	CFM (m ³ /h)	6,000 (10,194)	6,500 (11,043)	8,000 (13,592)	10,000 (16,989)	11,000 (18,688)	11,000 (18,688)	13,000 (22,086)
	External Static Pressure (ESP)	in H ₂ O (Pa)	0.5 (125)	0.5 (125)	0.5 (125)	0.5 (125)	0.5 (125)	0.5 (125)	0.5 (125)
	Motor	Hp (kW)	4.0 (3.0)	5.5 (4.0)	4.0 (3.0)	5.5 (4.0)	7.5 (5.5)	7.5 (5.5)	10.0 (7.5)
Coil (Chilled Water)	Face Area	ft ² (m ²)	12.2 (1.1)	12.2 (1.1)	23.9 (2.2)	23.9 (2.2)	23.9 (2.2)	23.9 (2.2)	23.9 (2.2)
	Face Velocity	FPM (m/s)	491 (2.5)	532 (2.7)	335 (1.7)	419 (2.1)	461 (2.3)	461 (2.3)	544 (2.8)
	Condensate Drain O.D	Inch	7/8	7/8	7/8	7/8	7/8	7/8	7/8
Chilled Water Control	3-Way Modulating Valve, Size	DN, mm	40	40	40	40	40	50	50
		Kv, m ³ /h	16	16	16	16	16	25	25
Filters (ASHRAE 52.5 MERV 8)	20" x 20" x 2"	Qty	N/A	N/A	N/A	N/A	N/A	N/A	N/A
	20" x 20" x 4"	Qty	4	4	6	6	6	6	6
	20" x 25" x 4"	Qty	N/A	N/A	2	2	2	2	2
Reheat (Electric)	3-Stages (rated at 415V)	MBH (kW)	41.0 (12.0)	41.0 (12.0)	61.4 (18.0)	61.4 (18.0)	61.4 (18.0)	61.4 (18.0)	61.4 (18.0)
Steam Humidifier (Optional)	Capacity (max.)	lbs/hr (kg/hr)	17 (8.0)	17 (8.0)	33 (15.0)	33 (15.0)	33 (15.0)	33 (15.0)	33 (15.0)
	Power Input (max.)	kW	6.0	6.0	11.3	11.3	11.3	11.3	11.3
Sound Pressure Level (at 2m distance, free field, downflow)		dBA	57	58	52	58	59	60	64

PHYSICAL DATA

Height	H	mm (inch)	1944 (76.5)	1944 (76.5)	1944 (76.5)	1944 (76.5)	1944 (76.5)	1944 (76.5)	1944 (76.5)
Width	W	mm (inch)	1464 (57.6)	1464 (57.6)	2554 (100.6)	2554 (100.6)	2554 (100.6)	2554 (100.6)	2554 (100.6)
Depth	D	mm (inch)	874 (34.4)	874 (34.4)	874 (34.4)	874 (34.4)	874 (34.4)	874 (34.4)	874 (34.4)
Weight		kg (lbs)	398 (876)	410 (902)	602 (1,324)	615 (1,353)	665 (1,463)	678 (1,492)	688 (1,514)

Note: 1.) Add 457mm (18 inch) to height of unit for Discharge Plenum (optional) – Upflow Models only
 2.) Add 32kg (71lbs)- Model 02 to 05; 51kg(112 lbs)- Model 07 to 13; 80kg(176 lbs)- Model 14 to 26 to weight of unit for Discharge Plenum (optional)- Upflow Model only

DUAL COILS OPTION

AIR COOLED DX & CHILLED WATER SYSTEMS

This system is a combination of the both Direct Expansion (DX) and Chilled Water (CW) system with 2 cooling coil. Cooling capacity and other parameters for DX and CW System are as per stated on respective tables; except for the following.

Model		DBDD/U 02	DBDD/U 03	DBDD/U 04	DBDD/U 05	DBDD/U 07	DBDD/U 09
Fan Motor (Indoor)	hp (kW)	1.0 (0.75)	1.0 (0.75)	1.5 (1.1)	2.0 (1.5)	2.0 (1.5)	4.0 (3.0)
Sound Pressure Level (at 2m distance, free field, downflow)	dBA	56	56	57	57	62	63
Weight	kg (lbs)	270 (594)	284 (625)	292 (642)	304 (669)	467 (1,027)	497 (1,093)

Model		DBDD/U 11	DBDD/U 13	DBDD/U 14	DBDD/U 16	DBDD/U 19	DBDD/U 22	DBDD/U 26
Fan Motor (Indoor)	hp (kW)	5.5 (4.0)	5.5 (4.0)	4.0 (3.0)	7.5 (5.5)	7.5 (5.5)	10.0 (7.5)	N/A
Sound Pressure Level (at 2m distance, free field, downflow)	dBA	66	70	65	65	66	69	
Weight	kg (lbs)	523 (1,151)	537 (1,181)	823 (1,811)	842 (1,852)	909 (2,000)	941 (2,070)	

Notes: 1.) Add 457mm (18inch) to height of unit for Discharge Plenum (optional) – Upflow Models only
 2.) Add 32kg (71 lbs)- Model 02 to 05; 51kg(112 lbs)-Model 07 to 13; 80kg(176 lbs)- Model 14 to 22 to weight of unit for Discharge Plenum (optional)- Upflow Model only

CONDENSER SELECTION

Selections are to be based on standard airflow rate and return air temperature of 24°C / 17°C (75°F / 62.5°F) or lesser at sea level.

Model	DX-System	DBAD/U 02	DBAD/U 03	DBAD/U 04	DBAD/U 05	DBAD/U 07	DBAD/U 09
	Dual Coils System	DBDD/U 02	DBDD/U 03	DBDD/U 04	DBDD/U 05	DBDD/U 07	DBDD/U 09
	DX-System with Hot Gas Reheat	DBRD/U 02	DBRD/U 03	DBRD/U 04	DBRD/U 05	DBRD/U 07	DBRD/U 09
Total Heat Rejection (Nominal)	MBH (kW)	46 (14)	51 (15)	60 (18)	73 (21)	101 (30)	151 (44)
35°C (95°F) Ambient	-	DBRC04	DBRC04	DBRC04	DBRC06	DBRC08	DBRC10
37.8°C (100°F) Ambient	-	DBRC04	DBRC04	DBRC06	DBRC06	DBRC08	DBRC13
40.6°C (105°F) Ambient	-	DBRC04	DBRC06	DBRC06	DBRC08	DBRC11	DBRC17
43°C (110°F) Ambient	See Note 1	DBRC06	DBRC06	DBRC08	DBRC11	DBRC17	DBRC20
46°C (115°F) Ambient	See Note 1	DBRC08	DBRC11	DBRC17	DBRC17	DBRC26	DBRC34
49°C (120°F) Ambient	See Note 2	DBRC11	DBRC11	DBRC17	DBRC20	DBRC26	DBRC34
52°C (125°F) Ambient	See Note 3	DBRC13	DBRC13	DBRC20	DBRC26	DBRC30	DBRC40

Model	DX-System	DBAD/U 11	DBAD/U 13	DBAD/U 14	DBAD/U 16	DBAD/U 19	DBAD/U 22	DBAD/U 26
	Dual Coils System	DBDD/U 11	DBDD/U 13	DBDD/U 14	DBDD/U 16	DBDD/U 19	DBDD/U 22	N/A
	DX-System with Hot Gas Reheat	DBRD/U 11	DBRD/U 13	DBRD/U 14	DBRD/U 16	DBRD/U 19	DBRD/U 22	DBRD/U 26
Total Heat Rejection (Nominal)	MBH (kW)	171 (50)	193 (57)	220 (64)	262 (77)	293 (86)	332 (97)	388 (114)
35°C (95°F) Ambient	-	DBRC13	DBRC17	DBRC17	DBRC20	DBRC20	DBRC26	DBRC30
37.8°C (100°F) Ambient	-	DBRC17	DBRC17	DBRC20	DBRC26	DBRC26	DBRC30	DBRC30
40.6°C (105°F) Ambient	-	DBRC20	DBRC26	DBRC26	DBRC26	DBRC34	DBRC34	DBRC34
43°C (110°F) Ambient	See Note 1	DBRC26	DBRC30	DBRC34	DBRC40	DBRC44	DBRC44	DBRC44
46°C (115°F) Ambient	See Note 1	DBRC40	DBRC44	DBRC44	DBRC30 x 2	DBRC30 x 2	DBRC40 x 2	DBRC40 x 2
49°C (120°F) Ambient	See Note 2	DBRC40	DBRC44	DBRC44	DBRC30 x 2	DBRC34 x 2	DBRC40 x 2	DBRC44 x 2
52°C (125°F) Ambient	See Note 3	DBRC44	DBRC44	DBRC26 x 2	DBRC30 x 2	DBRC34 x 2	DBRC44 x 2	DBRC44 x 2

Notes: 1.) Multiply Total Compressor Power Input by 1.05
 2.) Multiply Cooling Capacity by 0.9. Multiply Total Compressor Power Input by 1.1
 3.) Multiply Cooling Capacity by 0.9. Multiply Total Compressor Power Input by 1.2

ELECTRICAL DATA

AIR COOLED DX & CHILLED WATER SYSTEMS

1.) STANDARD - COOLING & ELECTRIC HEATERS

At 35°C (95°F) ambient; Return Air at 24°C/17°C/50 %RH (75°F/62.5°F/50 %RH)

Model	DBAD/U 02			DBAD/U 03			DBAD/U 04			DBAD/U 05			DBAD/U 07			DBAD/U 09		
	Power Supply	RLA	MCA	MFS	RLA	MCA	MFS	RLA	MCA	MFS	RLA	MCA	MFS	RLA	MCA	MFS	RLA	MCA
380V/ 3Ph/ 50Hz	15.6	18	20	15.7	18	20	17.6	20	25	20.1	22	32	32.7	37	50	39.1	44	60
400V/ 3Ph/ 50Hz	16.0	18	20	16.2	18	20	18.0	20	25	20.5	23	32	33.6	38	50	39.7	44	63
415V/ 3Ph/ 50Hz	16.4	19	20	16.6	19	20	18.4	21	25	21.0	23	32	34.5	39	50	40.3	45	63
460V/ 3Ph/ 60Hz	N/A			N/A			15.3	17	20	18.0	20	25	28.5	32	40	35.7	40	50

Model	DBAD/U 11			DBAD/U 13			DBAD/U 14			DBAD/U 16			DBAD/U 19			DBAD/U 22			DBAD/U 26		
	Power Supply	RLA	MCA	MFS	RLA	MCA	MFS	RLA	MCA	MFS	RLA	MCA	MFS	RLA	MCA	MFS	RLA	MCA	MFS	RLA	MCA
380V/ 3Ph/ 50Hz	43.5	49	63	51.6	58	75	58.0	64	75	65.7	71	100	72.1	78	100	77.5	83	100	93.4	100	125
400V/ 3Ph/ 50Hz	44.2	50	63	53.0	60	75	59.1	65	75	66.9	73	100	72.9	79	100	78.5	85	100	96.0	103	125
415V/ 3Ph/ 50Hz	45.3	51	63	55.6	63	80	60.6	67	75	68.7	75	100	73.8	80	100	80.6	87	100	101.0	109	125
460V/ 3Ph/ 60Hz	38.3	43	60	41.4	46	63	53.2	59	63	56.5	62	75	64.5	70	100	67.3	73	100	75.8	81	100

Return Air at 24°C/17°C/50 %RH (75°F/62.5°F/50 %RH)

Model	DBCD/U 02			DBCD/U 03			DBCD/U 04			DBCD/U 05			DBCD/U 07			DBCD/U 09		
	Power Supply	RLA	MCA	MFS	RLA	MCA	MFS	RLA	MCA	MFS	RLA	MCA	MFS	RLA	MCA	MFS	RLA	MCA
380V/ 3Ph/ 50Hz	9.7	12	16	9.7	12	16	9.7	12	16	11.3	13	16	18.9	23	25	20.3	24	30
400V/ 3Ph/ 50Hz	10.0	12	16	10.0	12	16	10.0	12	16	11.5	14	16	19.6	24	25	20.8	25	30
415V/ 3Ph/ 50Hz	10.2	12	16	10.2	12	16	10.2	12	16	11.7	14	16	20.0	24	25	21.2	25	30
460V/ 3Ph/ 60Hz	6.6	8	10	7.9	9	16	9.1	11	16	10.5	12	16	18.1	22	25	19.2	23	25

Model	DBCD/U 11			DBCD/U 13			DBCD/U 14			DBCD/U 16			DBCD/U 19			DBCD/U 22			DBCD/U 26		
	Power Supply	RLA	MCA	MFS	RLA	MCA	MFS	RLA	MCA	MFS	RLA	MCA	MFS	RLA	MCA	MFS	RLA	MCA	MFS	RLA	MCA
380V/ 3Ph/ 50Hz	22.0	26	30	23.9	28	32	29.6	35	40	31.5	37	40	34.5	40	50	34.5	40	50	38.0	44	50
400V/ 3Ph/ 50Hz	22.5	26	30	24.2	28	32	30.5	37	40	32.3	38	40	35.1	41	50	35.1	41	50	38.4	44	50
415V/ 3Ph/ 50Hz	22.8	27	30	24.5	29	32	31.2	37	40	32.9	39	40	35.6	42	50	35.6	42	50	38.8	45	50
460V/ 3Ph/ 60Hz	20.5	24	30	22.0	26	30	28.0	34	40	29.5	35	40	31.9	38	50	31.9	38	50	35.8	41	50

2.) STANDARD WITH OPTIONAL HUMIDIFIER

At 35°C (95°F) ambient; Return Air at 24°C/ 17°C/50 %RH (75°F/62.5°F/50 %RH)

Model	DBAD/U 02			DBAD/U 03			DBAD/U 04			DBAD/U 05			DBAD/U 07			DBAD/U 09		
	Power Supply	RLA	MCA	MFS	RLA	MCA	MFS	RLA	MCA	MFS	RLA	MCA	MFS	RLA	MCA	MFS	RLA	MCA
380V/ 3Ph/ 50Hz	24.7	27	32	24.8	27	32	26.7	29	32	29.2	31	40	41.8	46	60	48.2	53	63
400V/ 3Ph/ 50Hz	24.7	27	32	24.9	27	32	26.7	29	32	29.2	31	40	42.2	46	50	48.4	53	63
415V/ 3Ph/ 50Hz	24.8	27	32	25.0	27	32	26.8	29	32	29.3	31	40	42.9	47	50	48.7	53	63
460V/ 3Ph/ 60Hz	N/A			N/A			22.9	25	30	25.5	27	30	36.0	40	50	43.2	47	63

Model	DBAD/U 11			DBAD/U 13			DBAD/U 14			DBAD/U 16			DBAD/U 19			DBAD/U 22			DBAD/U 26		
	Power Supply	RLA	MCA	MFS	RLA	MCA	MFS	RLA	MCA	MFS	RLA	MCA	MFS	RLA	MCA	MFS	RLA	MCA	MFS	RLA	MCA
380V/ 3Ph/ 50Hz	52.6	58	75	60.7	68	80	75.1	81	100	82.8	89	100	89.2	95	100	94.6	100	125	110.5	117	150
400V/ 3Ph/ 50Hz	52.8	58	75	61.7	69	80	75.3	81	100	83.1	89	100	89.2	95	100	94.8	101	125	112.3	119	150
415V/ 3Ph/ 50Hz	53.7	59	80	64.0	72	100	76.2	82	100	84.3	91	100	89.5	96	100	96.3	103	125	116.7	124	150
460V/ 3Ph/ 60Hz	45.8	50	63	48.9	54	63	67.3	73	100	70.6	76	100	78.6	84	100	81.4	87	100	89.9	96	100

Return Air at 24°C/17°C/50 %RH (75°F/62.5°F/50 %RH)

Model	DBCD/U 02			DBCD/U 03			DBCD/U 04			DBCD/U 05			DBCD/U 07			DBCD/U 09		
	Power Supply	RLA	MCA	MFS	RLA	MCA	MFS	RLA	MCA	MFS	RLA	MCA	MFS	RLA	MCA	MFS	RLA	MCA
380V/ 3Ph/ 50Hz	18.8	21	25	18.8	21	25	18.8	21	25	20.4	22	25	28.0	32	40	29.4	33	40
400V/ 3Ph/ 50Hz	18.7	21	25	18.7	21	25	18.7	21	25	20.2	22	25	28.2	32	40	29.5	33	40
415V/ 3Ph/ 50Hz	18.6	21	25	18.6	21	25	18.6	21	25	20.0	22	25	28.4	33	40	29.6	34	40
460V/ 3Ph/ 60Hz	14.2	15	20	15.4	17	20	16.7	19	20	18.1	20	25	25.6	29	40	26.7	30	40

Model	DBCD/U 11			DBCD/U 13			DBCD/U 14			DBCD/U 16			DBCD/U 19			DBCD/U 22			DBCD/U 26		
	Power Supply	RLA	MCA	MFS	RLA	MCA	MFS	RLA	MCA	MFS	RLA	MCA	MFS	RLA	MCA	MFS	RLA	MCA	MFS	RLA	MCA
380V/ 3Ph/ 50Hz	31.1	35	40	33.0	37	40	46.7	52	60	48.6	54	60	51.6	57	63	51.6	57	63	55.1	61	70
400V/ 3Ph/ 50Hz	31.1	35	40	32.9	37	40	46.7	53	60	48.5	55	60	51.4	57	63	51.4	57	63	54.7	61	70
415V/ 3Ph/ 50Hz	31.2	35	40	32.9	37	40	46.8	53	60	48.5	55	60	51.3	58	63	51.3	58	63	54.5	61	70
460V/ 3Ph/ 60Hz	28.0	32	40	29.5	33	40	42.1	48	50	43.6	49	60	46.0	52	60	46.0	52	60	49.9	56	70

Note : RLA - Rated Load Amps

MCA - Minimum Circuit Amps

MFS - Maximum Fuse Size

ELECTRICAL DATA

AIR COOLED DUAL COILS (DX + CW) & DX WITH HOT GAS REHEAT SYSTEMS

1.) STANDARD - COOLING & ELECTRIC HEATERS

At 35°C (95°F) ambient; Return Air at 24°C/17°C/50 %RH (75°F/62.5°F/ 50 %RH)

Model	DBDD/U 02				DBDD/U 03				DBDD/U 04				DBDD/U 05				DBDD/U 07				DBDD/U 09			
	RLA (DX)	RLA (CHW)	MCA	MFS	RLA (DX)	RLA (CHW)	MCA	MFS	RLA (DX)	RLA (CHW)	MCA	MFS	RLA (DX)	RLA (CHW)	MCA	MFS	RLA (DX)	RLA (CHW)	MCA	MFS	RLA (DX)	RLA (CHW)	MCA	MFS
380V/ 3Ph/ 50Hz	15.6	9.7	18	20	15.7	9.7	18	20	18.3	10.4	20	25	20.1	11.3	22	30	32.7	18.9	37	40	40.8	22.0	45	60
400V/ 3Ph/ 50Hz	16.0	10.0	18	20	16.2	10.0	18	20	18.6	10.6	21	25	20.5	11.5	23	30	33.6	19.6	38	40	41.4	22.5	46	60
415V/ 3Ph/ 50Hz	16.4	10.2	19	20	16.6	10.2	19	20	19.0	10.8	21	25	21.0	11.7	23	30	34.5	20.0	39	40	41.9	22.8	47	60
460V/ 3Ph/ 60Hz	N/A				N/A				16.0	9.8	18	20	18.0	10.5	20	25	28.5	18.1	32	40	37.0	20.5	41	50

Model	DBDD/U 11				DBDD/U 13				DBDD/U 14				DBDD/U 16				DBDD/U 19				DBDD/U 22			
	RLA (DX)	RLA (CHW)	MCA	MFS	RLA (DX)	RLA (CHW)	MCA	MFS	RLA (DX)	RLA (CHW)	MCA	MFS	RLA (DX)	RLA (CHW)	MCA	MFS	RLA (DX)	RLA (CHW)	MCA	MFS	RLA (DX)	RLA (CHW)	MCA	MFS
380V/ 3Ph/ 50Hz	45.4	23.9	51	63	51.6	23.9	58	75	58.0	29.6	64	75	68.7	34.5	74	100	72.1	34.5	78	100	81.0	38.0	87	100
400V/ 3Ph/ 50Hz	45.9	24.2	51	63	53.0	24.2	60	75	59.1	30.5	65	75	69.7	35.1	76	100	72.9	35.1	79	100	81.8	38.4	88	100
415V/ 3Ph/ 50Hz	47.0	24.5	53	63	55.6	24.5	63	75	60.6	31.2	67	75	71.4	35.6	78	100	73.8	35.6	80	100	83.8	38.8	90	100
460V/ 3Ph/ 60Hz	39.8	22.0	44	60	41.4	22.0	46	63	53.2	28.0	59	63	58.9	31.9	65	75	64.5	31.9	70	100	71.2	35.8	77	100

2.) STANDARD WITH OPTIONAL HUMIDIFIER

At 35°C (95°F) ambient; Return Air at 24°C/17°C/50 %RH (75°F/62.5°F/ 50 %RH)

Model	DBDD/U 02				DBDD/U 03				DBDD/U 04				DBDD/U 05				DBDD/U 07				DBDD/U 09			
	RLA (DX)	RLA (CHW)	MCA	MFS	RLA (DX)	RLA (CHW)	MCA	MFS	RLA (DX)	RLA (CHW)	MCA	MFS	RLA (DX)	RLA (CHW)	MCA	MFS	RLA (DX)	RLA (CHW)	MCA	MFS	RLA (DX)	RLA (CHW)	MCA	MFS
380V/ 3Ph/ 50Hz	24.7	18.8	27	32	24.8	18.8	27	32	27.4	19.5	29	32	29.2	20.4	31	40	41.8	28.0	46	50	49.9	31.1	55	63
400V/ 3Ph/ 50Hz	24.7	18.7	27	32	24.9	18.7	27	32	27.3	19.3	29	32	29.2	20.2	31	40	42.2	28.2	46	50	50.0	31.1	55	63
415V/ 3Ph/ 50Hz	24.8	18.6	27	32	25.0	18.6	27	32	27.4	19.2	29	32	29.3	20.0	31	40	42.9	28.4	47	50	50.3	31.2	55	63
460V/ 3Ph/ 60Hz	N/A				N/A				23.6	17.4	25	30	25.5	18.1	27	30	36.0	25.6	40	50	44.5	28.0	49	63

Model	DBDD/U 11				DBDD/U 13				DBDD/U 14				DBDD/U 16				DBDD/U 19				DBDD/U 22			
	RLA (DX)	RLA (CHW)	MCA	MFS	RLA (DX)	RLA (CHW)	MCA	MFS	RLA (DX)	RLA (CHW)	MCA	MFS	RLA (DX)	RLA (CHW)	MCA	MFS	RLA (DX)	RLA (CHW)	MCA	MFS	RLA (DX)	RLA (CHW)	MCA	MFS
380V/ 3Ph/ 50Hz	54.5	33.0	60	75	60.7	33.0	68	80	75.1	46.7	81	100	85.8	51.6	92	100	89.2	51.6	95	100	98.1	55.1	104	125
400V/ 3Ph/ 50Hz	54.6	32.9	60	75	61.7	32.9	69	80	75.3	46.7	81	100	86.0	51.4	92	100	89.2	51.4	95	100	98.1	54.7	104	125
415V/ 3Ph/ 50Hz	55.4	32.9	61	75	64.0	32.9	72	80	76.2	46.8	82	100	87.1	51.3	93	100	89.5	51.3	96	100	99.5	54.5	106	125
460V/ 3Ph/ 60Hz	47.3	29.5	52	63	48.9	29.5	54	63	67.3	42.1	73	100	73.0	46.0	79	100	78.6	46.0	84	100	85.3	49.9	91	100

3.) COOLING & HOT GAS REHEAT

At 35°C (95°F) ambient; Return Air at 24°C/17°C/50 %RH (75°F/62.5°F/ 50 %RH)

Model	DBRD/U 02			DBRD/U 03			DBRD/U 04			DBRD/U 05			DBRD/U 07			DBRD/U 09		
	RLA	MCA	MFS	RLA	MCA	MFS	RLA	MCA	MFS	RLA	MCA	MFS	RLA	MCA	MFS	RLA	MCA	MFS
380V/ 3Ph/ 50Hz	8.0	9	16	8.1	10	16	10.0	12	20	12.4	15	20	17.4	21	32	23.8	28	40
400V/ 3Ph/ 50Hz	8.0	9	16	8.2	10	16	10.0	12	20	12.5	15	20	17.5	21	32	23.6	28	40
415V/ 3Ph/ 50Hz	8.1	10	16	8.3	10	16	10.1	12	20	12.6	15	20	17.8	21	32	23.7	28	40
460V/ 3Ph/ 60Hz	N/A			N/A			7.8	9	16	10.5	12	20	13.4	16	25	20.6	25	40

Model	DBRD/U 11			DBRD/U 13			DBRD/U 14			DBRD/U 16			DBRD/U 19			DBRD/U 22			DBRD/U 26		
	RLA	MCA	MFS	RLA	MCA	MFS	RLA	MCA	MFS	RLA	MCA	MFS	RLA	MCA	MFS	RLA	MCA	MFS	RLA	MCA	MFS
380V/ 3Ph/ 50Hz	28.2	34	50	36.3	43	63	35.1	39	50	42.8	47	63	49.2	54	75	54.6	60	75	70.5	77	100
400V/ 3Ph/ 50Hz	28.1	33	50	37.0	44	63	35.0	39	50	42.8	47	63	48.8	54	63	54.4	60	75	71.9	79	100
415V/ 3Ph/ 50Hz	28.6	34	50	39.0	47	75	35.5	39	50	43.7	48	63	48.8	54	63	55.6	61	75	76.0	84	100
460V/ 3Ph/ 60Hz	23.2	28	40	26.3	31	50	30.6	34	40	33.9	37	50	41.9	46	60	44.7	49	63	53.2	58	75

4.) COOLING & HOT GAS REHEAT WITH OPTIONAL HUMIDIFIER

At 35°C (95°F) ambient; Return Air at 24°C/17°C/50 %RH (75°F/62.5°F/ 50 %RH)

Model	DBRD/U 02			DBRD/U 03			DBRD/U 04			DBRD/U 05			DBRD/U 07			DBRD/U 09		
	RLA	MCA	MFS	RLA	MCA	MFS	RLA	MCA	MFS	RLA	MCA	MFS	RLA	MCA	MFS	RLA	MCA	MFS
380V/ 3Ph/ 50Hz	17.1	19	25	17.2	19	25	19.1	21	25	21.6	24	32	26.6	30	40	32.9	38	50
400V/ 3Ph/ 50Hz	16.6	19	25	16.8	19	25	18.6	21	25	21.1	23	32	26.1	30	40	32.3	37	50
415V/ 3Ph/ 50Hz	16.4	19	25	16.6	19	25	18.4	21	25	21.0	23	32	26.2	30	40	32.0	37	50
460V/ 3Ph/ 60Hz	N/A			N/A			15.3	17	20	18.0	20	25	20.9	24	32	28.1	32	40

Model	DBRD/U 11			DBRD/U 13			DBRD/U 14			DBRD/U 16			DBRD/U 19			DBRD/U 22			DBRD/U 26		
	RLA	MCA	MFS	RLA	MCA	MFS	RLA	MCA	MFS	RLA	MCA	MFS	RLA	MCA	MFS	RLA	MCA	MFS	RLA	MCA	MFS
380V/ 3Ph/ 50Hz	37.3	43	63	45.4	52	80	52.2	56	75	59.9	64	80	66.3	71	80	71.7	77	100	87.6	95	125
400V/ 3Ph/ 50Hz	36.7	42	63	45.6	53	80	51.2	55	63	59.0	63	80	65.0	70	80	70.6	76	100	88.1	95	125
415V/ 3Ph/ 50Hz	37.0	43	63	47.3	55	80	51.2	55	63	59.3	64	80	64.5	69	80	71.3	77	100	91.7	99	125
460V/ 3Ph/ 60Hz	30.7	35	50	33.8	39	50	44.7	48	60	48.0	51	63	56.0	60	75	58.8	63	80	67.3	72	100

Note : RLA - Rated Load Amps

MCA - Minimum Circuit Amps

MFS - Maximum Fuse Size

DIMENSIONAL DATA

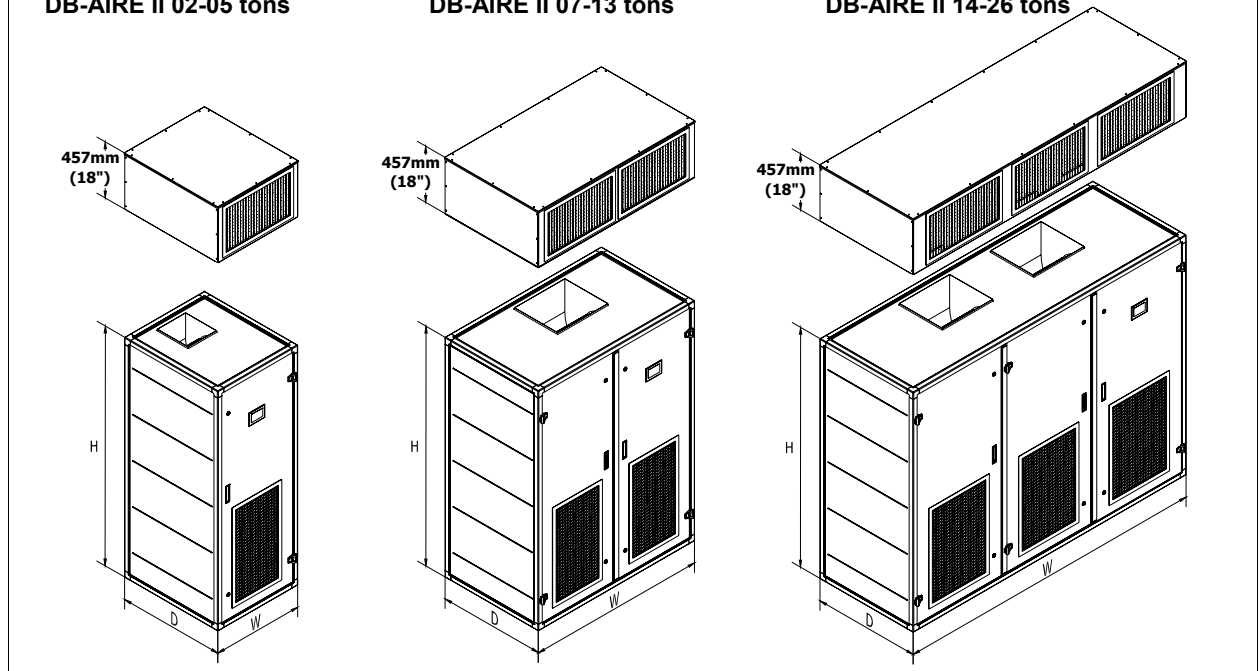
AIR COOLED DX & CHILLED WATER SYSTEMS

UP FLOW (Optional Discharge Plenum)	Model	DX System		DBAU 02	DBAU 03	DBAU 04	DBAU 05	DBAU 07	DBAU 09	DBAU 11	DBAU 13	DBAU 14	DBAU 16	DBAU 19	DBAU 22	DBAU 26
		CW System		DBCW 02	DBCW 03	DBCW 04	DBCW 05	DBCW 07	DBCW 09	DBCW 11	DBCW 13	DBCW 14	DBCW 16	DBCW 19	DBCW 22	DBCW 26
		Dual Coils System		DBDU 02	DBDU 03	DBDU 04	DBDU 05	DBDU 07	DBDU 09	DBDU 11	DBDU 13	DBDU 14	DBDU 16	DBDU 19	DBDU 22	-
		DX-System with Hot Gas Reheat		DBRU 02	DBRU 03	DBRU 04	DBRU 05	DBRU 07	DBRU 09	DBRU 11	DBRU 13	DBRU 14	DBRU 16	DBRU 19	DBRU 22	DBRU 26
	Height	H	mm (inch)	1944 (76.5)	1944 (76.5)	1944 (76.5)	1944 (76.5)	1944 (76.5)	1944 (76.5)	1944 (76.5)	1944 (76.5)	1944 (76.5)	1944 (76.5)	1944 (76.5)	1944 (76.5)	1944 (76.5)
Width	W	mm (inch)	749 (29.5)	749 (29.5)	749 (29.5)	749 (29.5)	1464 (57.6)	1464 (57.6)	1464 (57.6)	1464 (57.6)	2554 (100.6)	2554 (100.6)	2554 (100.6)	2554 (100.6)	2554 (100.6)	2554 (100.6)
Depth	D	mm (inch)	874 (34.4)	874 (34.4)	874 (34.4)	874 (34.4)	874 (34.4)	874 (34.4)	874 (34.4)	874 (34.4)	874 (34.4)	874 (34.4)	874 (34.4)	874 (34.4)	874 (34.4)	874 (34.4)

DB-AIRE II 02-05 tons

DB-AIRE II 07-13 tons

DB-AIRE II 14-26 tons

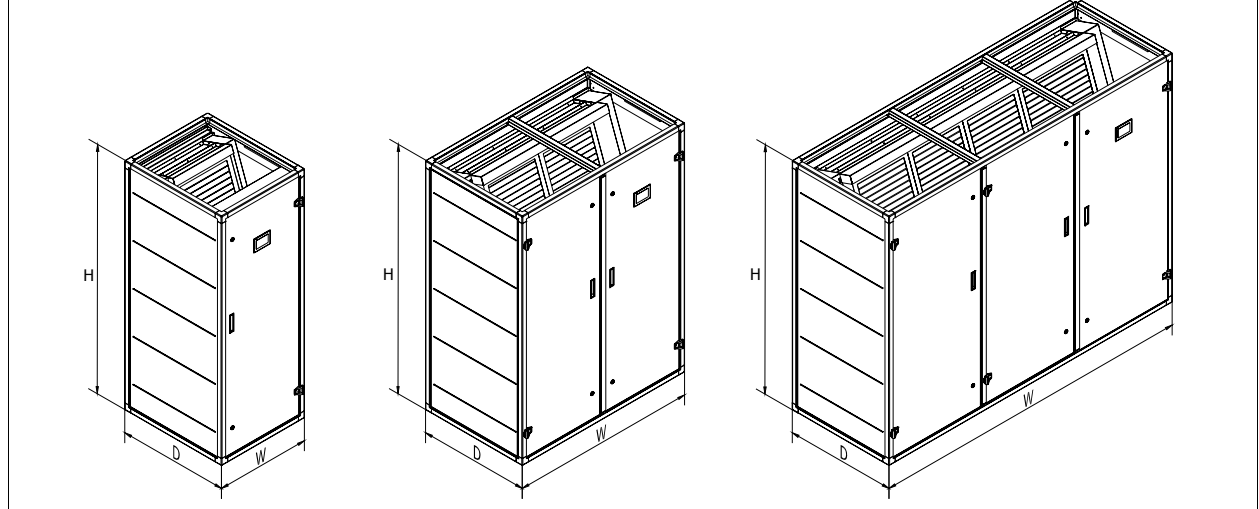


DOWN FLOW	Model	DX System		DBAD 02	DBAD 03	DBAD 04	DBAD 05	DBAD 07	DBAD 09	DBAD 11	DBAD 13	DBAD 14	DBAD 16	DBAD 19	DBAD 22	DBAD 26
		CW System		DBCW 02	DBCW 03	DBCW 04	DBCW 05	DBCW 07	DBCW 09	DBCW 11	DBCW 13	DBCW 14	DBCW 16	DBCW 19	DBCW 22	DBCW 26
		Dual Coils System		DBDD 02	DBDD 03	DBDD 04	DBDD 05	DBDD 07	DBDD 09	DBDD 11	DBDD 13	DBDD 14	DBDD 16	DBDD 19	DBDD 22	-
		DX-System with Hot Gas Reheat		DBRD 02	DBRD 03	DBRD 04	DBRD 05	DBRD 07	DBRD 09	DBRD 11	DBRD 13	DBRD 14	DBRD 16	DBRD 19	DBRD 22	DBRD 26
	Height	H	mm (inch)	1944 (76.5)	1944 (76.5)	1944 (76.5)	1944 (76.5)	1944 (76.5)	1944 (76.5)	1944 (76.5)	1944 (76.5)	1944 (76.5)	1944 (76.5)	1944 (76.5)	1944 (76.5)	1944 (76.5)
Width	W	mm (inch)	749 (29.5)	749 (29.5)	749 (29.5)	749 (29.5)	1464 (57.6)	1464 (57.6)	1464 (57.6)	1464 (57.6)	2554 (100.6)	2554 (100.6)	2554 (100.6)	2554 (100.6)	2554 (100.6)	2554 (100.6)
Depth	D	mm (inch)	874 (34.4)	874 (34.4)	874 (34.4)	874 (34.4)	874 (34.4)	874 (34.4)	874 (34.4)	874 (34.4)	874 (34.4)	874 (34.4)	874 (34.4)	874 (34.4)	874 (34.4)	874 (34.4)

DB-AIRE II 02-05 tons

DB-AIRE II 07-13 tons

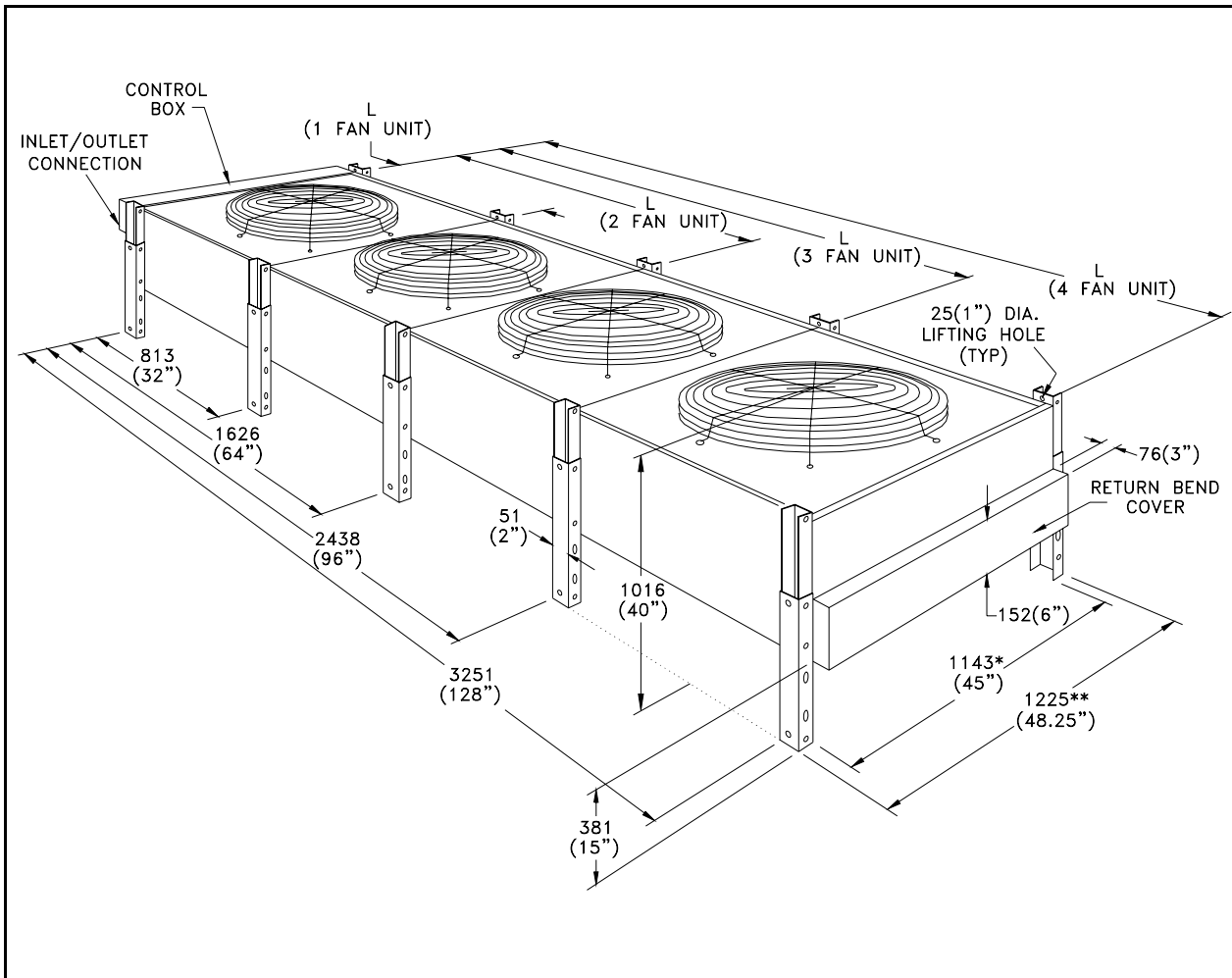
DB-AIRE II 14-26 tons



Note: DBDD/U26 Dual Coils option not available.

REMOTE AIR-COOLED CONDENSERS

TECHNICAL DATA

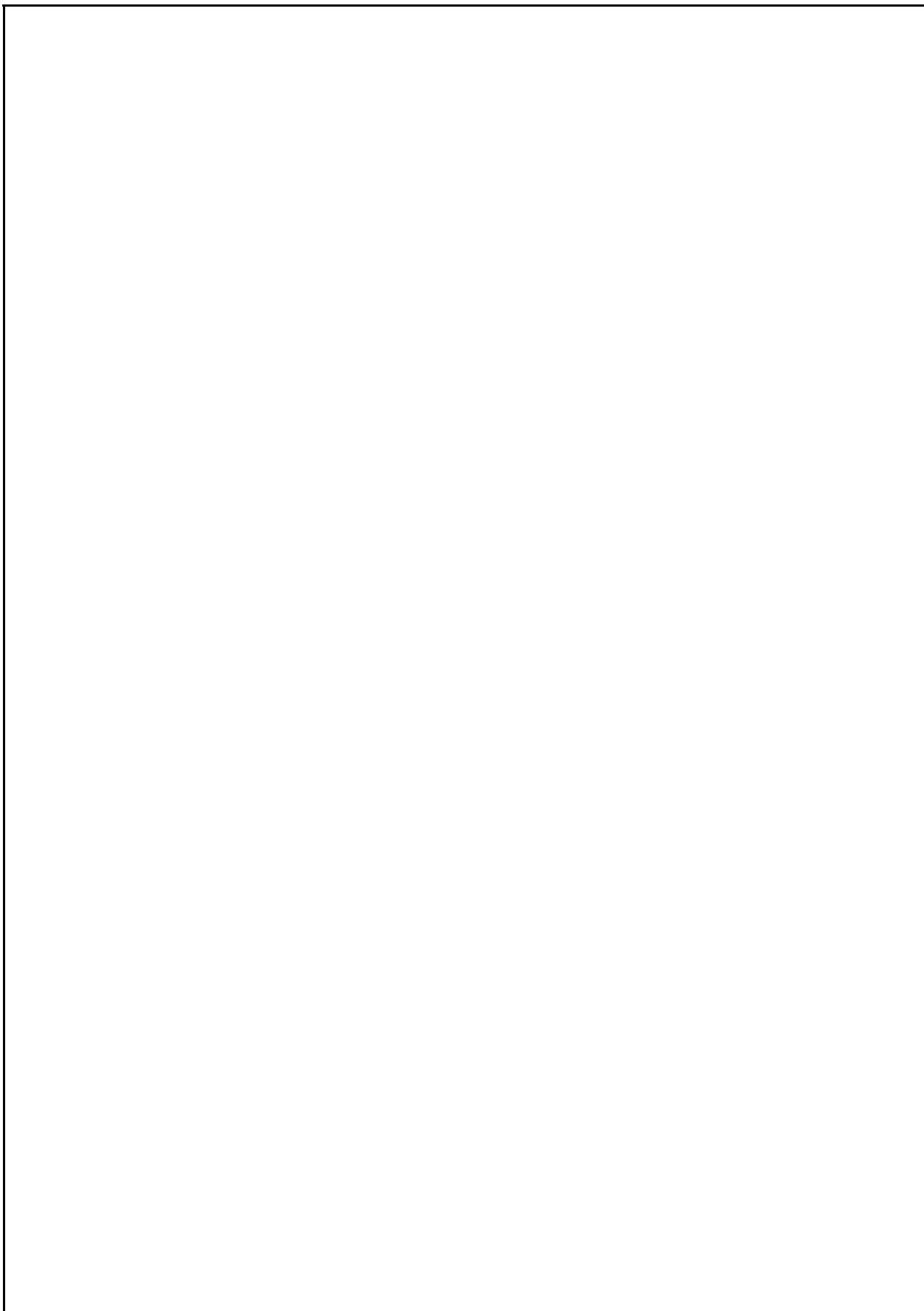


Model	Physical Data				Electrical Data						
	Length 'L' mm (ins)	Fans		Approx. Weight kg (lbs)	Motor Qty	RPM		Motor FLA (3-Phase)			
		Qty	Total L/S (CFM)			50Hz	60Hz	380V (50Hz)	400V (50Hz)	415V (50Hz)	460V (60Hz)
DBRC 04	870 (34¼)	1	2030 (4300)	100 (220)	1	900	1075	220-240Vac, 1Ph, 50/60Hz. FLA @ 240V/50Hz = 1.4A; FLA @ 240V/60Hz = 1.5A			
DBRC 06	870 (34¼)	1	3210 (6800)	111 (244)	1	925	1110	2.0	1.9	1.8	1.7
DBRC 08	870 (34¼)	1	3210 (6800)	122 (268)	1	925	1110	2.0	1.9	1.8	1.7
DBRC 10	870 (34¼)	1	3210 (6800)	134 (295)	1	925	1110	2.0	1.9	1.8	1.7
DBRC 11	870 (34¼)	1	3210 (6800)	180 (400)	1	925	1110	2.0	1.9	1.8	1.7
DBRC 13	1683 (66¼)	2	6420 (13600)	190 (420)	2	925	1110	4.0	3.8	3.6	3.4
DBRC 17	1683 (66¼)	2	6420 (13600)	204 (450)	2	925	1110	4.0	3.8	3.6	3.4
DBRC 20	1683 (66¼)	2	6420 (13600)	265 (583)	2	925	1110	4.0	3.8	3.6	3.4
DBRC 26	2500 (98¼)	3	9630 (20400)	288 (634)	3	925	1110	6.0	5.7	5.4	5.1
DBRC 30	2500 (98¼)	3	9630 (20400)	320 (700)	3	925	1110	6.0	5.7	5.4	5.1
DBRC 34	2500 (98¼)	3	9630 (20400)	355 (780)	3	925	1110	6.0	5.7	5.4	5.1
DBRC 40	3308 (130¼)	4	12838 (27200)	380 (835)	4	925	1110	8.0	7.6	7.2	6.8
DBRC 44	3308 (130¼)	4	12838 (27200)	410 (900)	4	925	1110	8.0	7.6	7.2	6.8

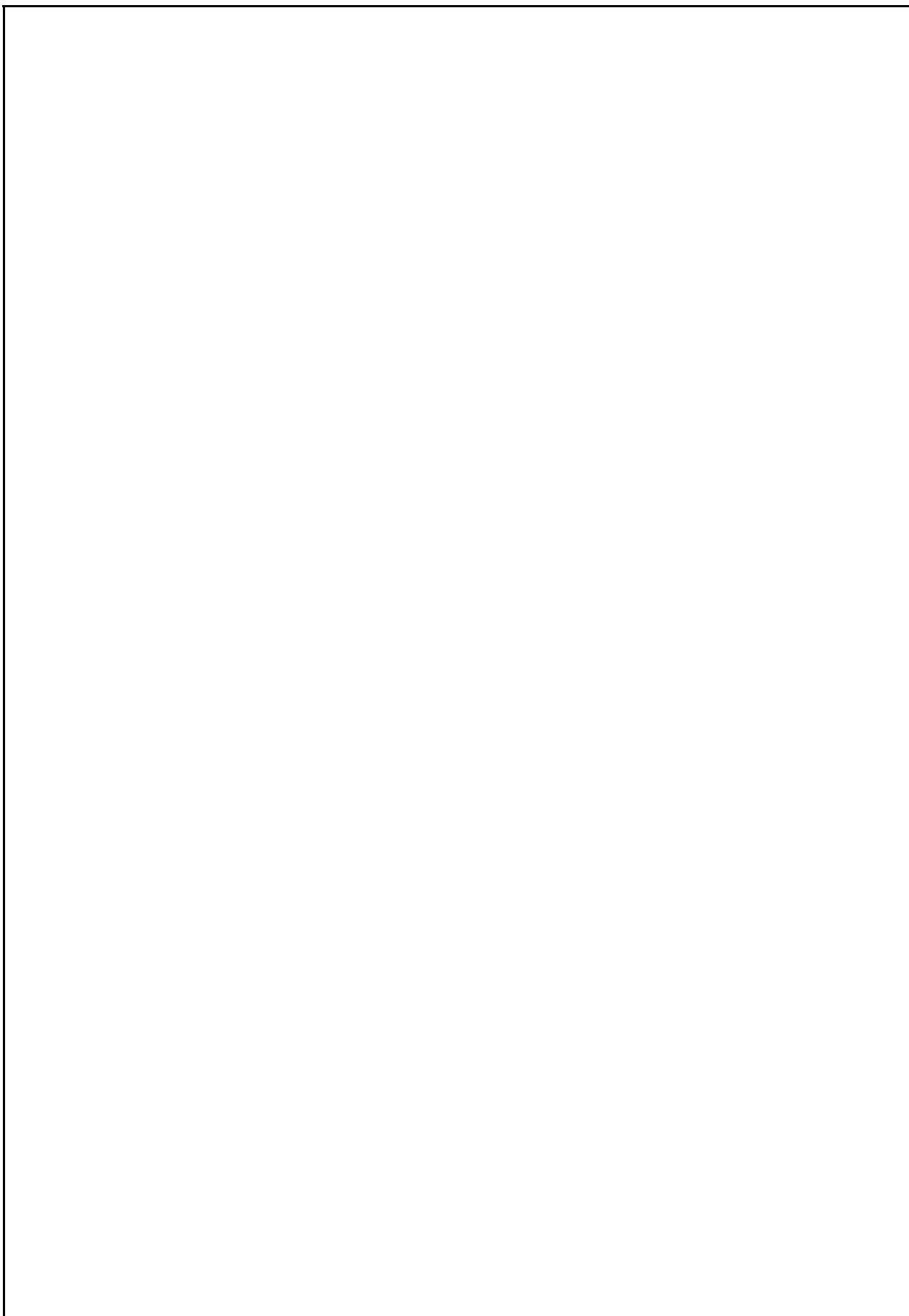
Notes: 1.) All dimensions are in mm (inches).
2.) * = 889(35"), ** = 972(38.25") for DBRC-04

TYPICAL WIRING SCHEMATIC

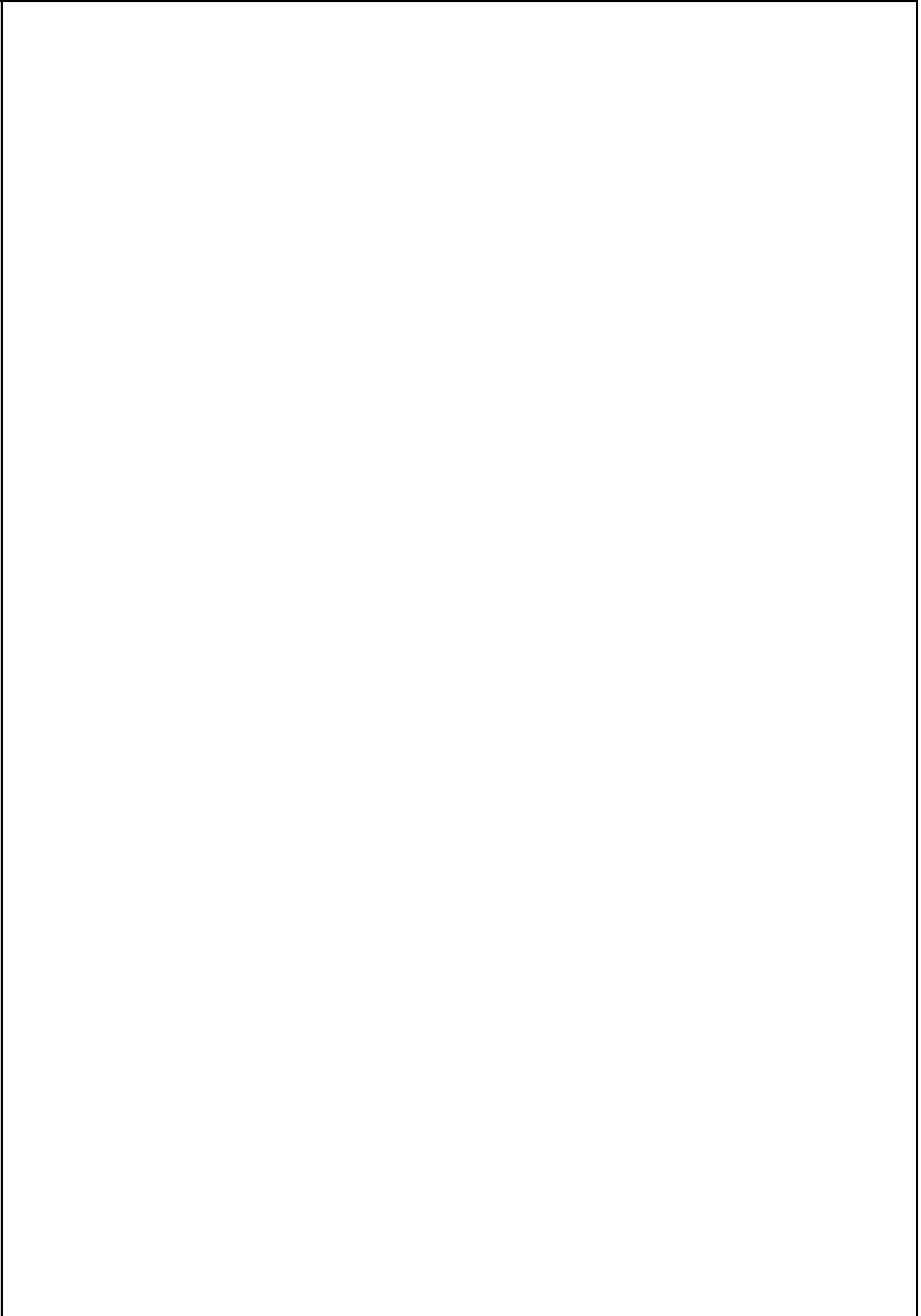
DBAD/U



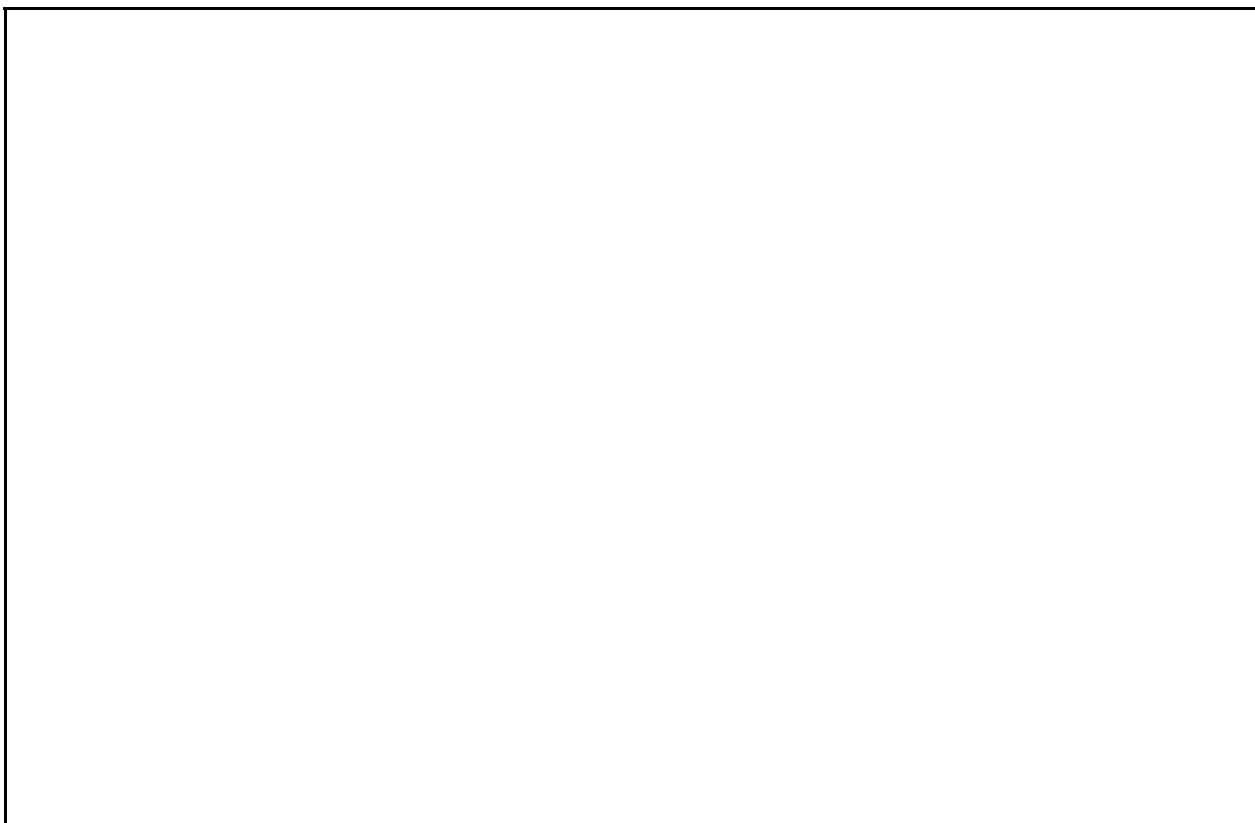
TYPICAL WIRING SCHEMATIC



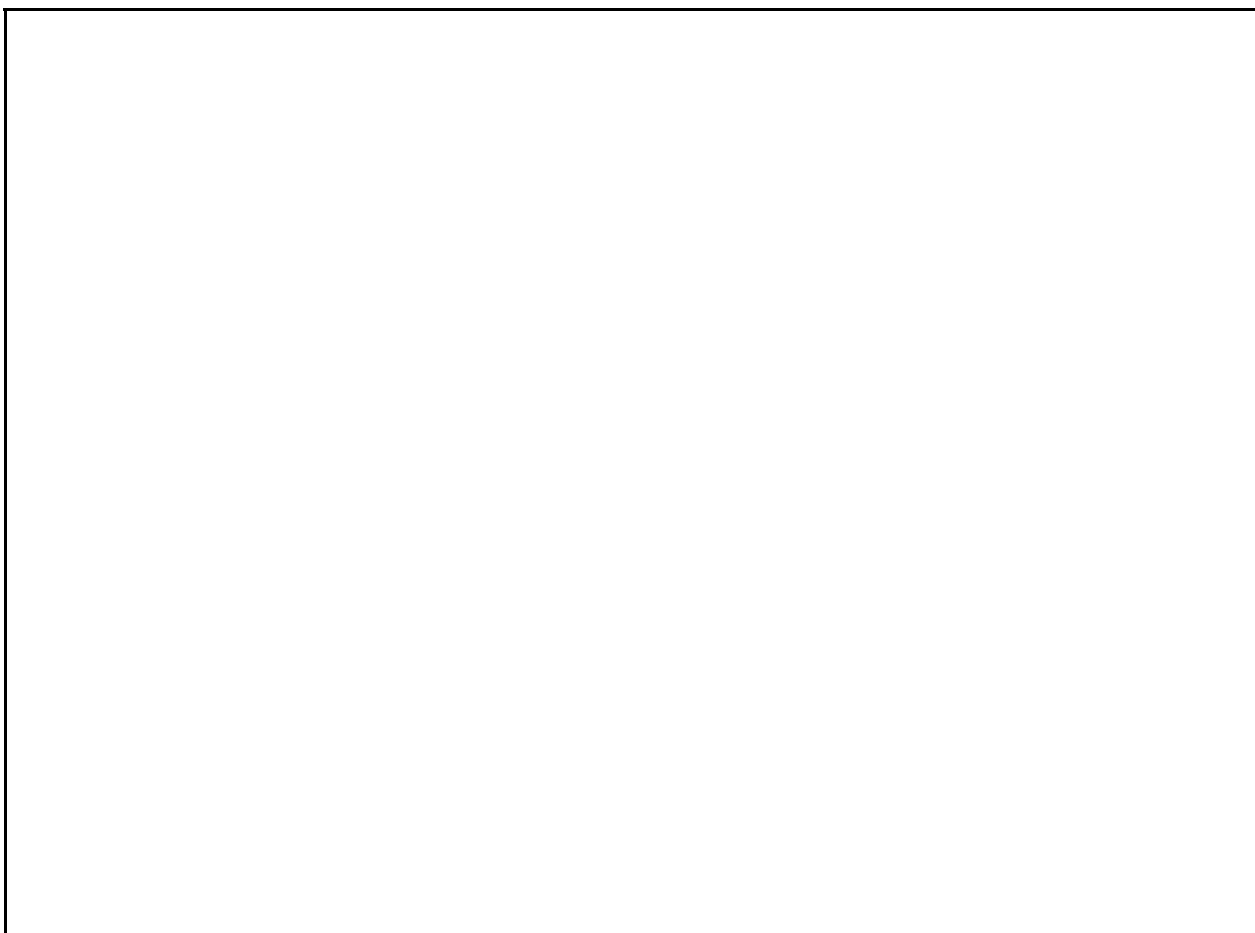
TYPICAL WIRING SCHEMATIC



TYPICAL WIRING SCHEMATIC



DBRC



GUIDE SPECIFICATIONS

This specification describes requirements for precision air conditioning system. The system shall be designed to maintain precised temperature and humidity conditions for applications such as computer server rooms, telecommunication facilities, clean rooms, laboratories, etc. The precision environmental control system shall be factory assembled, DB-Aire II model vertical floor mounted by Dunham-Bush Industries, Malaysia.

DESIGN REQUIREMENTS

(A) Direct Expansion (DX) System

- The system shall have a total cooling capacity of _____MBH / _____kW and a sensible cooling capacity of _____MBH / _____kW based on an entering air temperature of _____°F / _____°C DB and _____°F / _____°C WB.
- The system shall be designed based on _____°F / _____°C DB ambient temperature. For low ambient application, the system shall also be designed to operate at _____°F/_____°C DB ambient temperature.
- The unit shall be supplied with _____/_____/_____(Volt/Phase/Hz) electrical service.
- The unit shall be of Upflow / Downflow configured model.

(B) Chilled Water (CW) System

- The system shall have a total cooling capacity of _____MBH / _____kW and a sensible cooling capacity of _____MBH / _____kW based on an entering air temperature of _____°F / _____°C DB and _____°F / _____°C WB.
- The system shall be supplied with chilled water with an entering water temperature of _____°F / _____°C and leaving water temperature _____°F / _____°C.
- The unit shall be supplied with _____/_____/_____(Volt/Phase/Hz) electrical service.
- The unit shall be of Upflow / Downflow configured model.

(C) Dual Coils (DX + CW) System

- The system shall have a total cooling capacity of _____MBH / _____kW and a sensible cooling capacity of _____MBH / _____kW based on an entering air temperature of _____°F / _____°C DB and _____°F / _____°C WB.
- The DX system shall be designed based on _____°F / _____°C DB ambient temperature. For low ambient application, the system shall also be designed to operate at _____°F/_____°C DB ambient temperature.
- The CW system shall be supplied with chilled water with an entering water temperature of _____°F / _____°C and leaving water temperature _____°F / _____°C.
- The unit shall be supplied with _____/_____/_____(Volt/Phase/Hz) electrical service.
- The unit shall be of Upflow / Downflow configured model.

(D) Direct Expansion (DX) System with hot gas reheat

- The system shall have a total cooling capacity of _____MBH / _____kW and a sensible cooling capacity of _____MBH / _____kW based on an entering air temperature of _____°F / _____°C DB and _____°F / _____°C WB.
- The system shall be designed based on _____°F / _____°C DB ambient temperature. For low ambient application, the system shall also be designed to operate at _____°F/ _____°C DB ambient temperature.
- The unit shall be supplied with _____/_____/_____(Volt/Phase/Hz) electrical service.
- The unit shall be of Upflow / Downflow configured model.

1 STANDARD FEATURES (ALL SYSTEMS, INDOOR UNIT)

1.1 Cabinet

The cabinet comprises an anodized aluminium frame of epoxy powder coated black color paint with nylon corners and removable steel sheet panels. All panels shall be externally installed onto the cabinet by using special stopper system without using screws. The stopper system shall also facilitate the removable of panels for additional ease of field installation, service and maintenance on the system. All panels and access doors shall be fabricated from sturdy heavy gauge of 1.0mm steel sheets with epoxy powder coated oven baked black color paint to provide a durable finish. All panels shall be of 25mm (1 inch) thick single skin and lined with minimum 2lbs/ft³ density thermal and acoustical fiberglass insulation with fire resistant of Class O (BS 476 Part 6, 7). The system shall be designed for front access only with hinged and lock type full height doors.

1.2 Filters

The system shall be provided with 2 inches (50mm) deep (for model 02-05) or 4 inches (100mm) deep (for model 07-26) extended surface pleated disposable type filters rated for MERV8 efficiency to ASHRAE 52.2 standard (equivalent to EU4). Filters shall be withdrawable from the front of the unit.

1.3 Blower Assembly

Blowers shall be belt driven double-inlet-double-width (DIDW), statically and dynamically balanced with multiple forward curved blades mounted on a solid steel keyed shaft. Heavy-duty V-belt fan drive (sized for 200% safety factor) with cast iron pulleys keyed and secured to the blower shaft shall be provided.

1.4 Motor Assembly

Motors shall be of totally enclosed fan cooled (TEFC) with IP55 enclosure rating. Motors shall be mounted to an adjustable motor frame. Motor pulleys shall be cast iron, keyed and secured to the motor shaft.

GUIDE SPECIFICATIONS

1.5 Evaporator Air Discharge

1.5.1 Up-Flow (Front Free Return)

The system shall be configured for up-flow pattern with front free evaporator return air and top evaporator air discharge. The system shall be supplied with grilles on the cabinet doors for front return air configuration. Up-flow systems are available with optional Discharge Plenum.

1.5.2 Down-Flow (Top Free or Ducted Return)

The system shall be configured for down-flow pattern with top free or ducted evaporator return air and bottom evaporator air discharge through the raised floor.

1.6 Electric Reheat or Hot Gas Reheat

1.6.1 For Direct Expansion (DX) System, Chilled Water (CW) System and Dual Coils (DX+CW) System only.

The electric reheat shall be factory installed low watt density finned-tubular nickel plated element heater with overheat safety controls. The electric reheat shall be of three equal stages giving a more accurate controlled response to the room requirement.

1.6.2 For Direct Expansion (DX) System with Hot Gas Reheat only

The unit shall incorporate a hot gas reheat coil located downstream of the evaporator coil with modulating valve which is completely integrated to the unit's microprocessor control. For units with two refrigerant circuits, each circuit shall operate independently with its own modulating valve.

1.7 Electrical Circuits

The system shall be provided with a factory installed electrical enclosure as per local code requirements. Control voltage of the system shall be 24Vac. The fan motor(s), compressor(s), electric heaters, humidifier (if applicable) shall have their own circuit breaker and contactor. The electrical circuit shall have provision for user to cut off control power during fire / emergency shutdown

1.8 Control System – Vision 2020i Controller

1.8.1 Controller and display

The unit shall be provided with Vision 2020i control system with the following features,

- The control algorithm and parameters shall be stored in flash memory and E²PROM of the controller and shall retain even in the event of power failures, without requiring a backup battery
- 4.3" graphical touch terminal with 65k color display
- Built in memory for data logging
- Temperature and humidity controlled
- Configurable by user
- Alarm status/display
- Analog input/output display
- Digital input/output status
- Remote start/stop input
- Digital input for customer input alarm
- General alarm output (dry contact)
- Self-diagnostics

- Security password access with multiple access level for advanced settings
- Unit status display with following information:
 - Current room temperature and temperature setpoint
 - Current room relative humidity and relative humidity setpoint
 - System ON/OFF
 - Operating mode (cooling/ heating/ humidifying/ dehumidifying)

1.8.2 Alarm Monitoring

When the system is in alarm condition, the system shall activate an audible buzzer and visual alarm message on the terminal display. A digital output (dry contact) shall be closed to indicate the alarm condition. The following alarm conditions shall be monitored by the controller:

- High room temperature
- Low room temperature
- High supply air temperature
- High room humidity
- Low room humidity
- No air flow/loss of air flow
- Filter dirty
- Sensor failure
- Evaporator fan overload alarm
- Customer interlock alarm
- Unit/ Compressor running hours threshold exceeded
- LAN network disconnected alarm
- High/Low refrigerant pressure alarm (DX models)
- Chilled water flow switch alarm (chilled water models)
- Humidity Alarms
- Under floor water detector alarm (optional)
- Smoke detector alarm (optional)

1.8.3 Master-Slave Sequencing Control

When more than one unit is present in the system, master-slave or duty-standby control of this group of units shall be done by just connecting controller of each unit in serial and require no additional controller.

1.8.4 BMS communications and remote monitoring

ModBus RTU RS485 communication port shall be a standard feature of the controller. On top of that, the following options shall be available for BMS communications and remote monitoring:

- ModBus TCPIP
- BACnet TCPIP / PTP / MSTP
- LONworks
- GSM Modem
- SNMP

2 DIRECT EXPANSION (DX) SPLIT SYSTEMS WITH REMOTE OUTDOOR AIR COOLED CONDENSER (DBRC MODELS)

2.1 Scroll Compressor

Compressor shall be mounted on the base via vibration isolators. Compressor shall be charged with polyolester oil and designed for use with R407C refrigerant.

GUIDE SPECIFICATIONS

2.2 Refrigeration Circuits

The refrigeration system shall be of the direct expansion type with one (Model Q2-13) or two (Model 14-26) hermetic scroll compressors complete with rotalock connections. All refrigeration circuit shall be pre-piped with copper tubing and include expansion valve with external equalizer, filter dryer, sight glass, refrigerant service valves, pressure fittings of manual reset high pressure control/auto reset low pressure safety cutouts and charging/access ports in each circuit.

2.3 Evaporator Coil

The evaporator coil shall be of draw through air design for uniform air distribution. The evaporator coil shall be quality construction of seamless copper tube, mechanically bonded to hydrophilic aluminium fins with galvanized coil plates. The coil shall be factory leak and pressure tested to 450psig (31 bar) and the refrigeration system shall be sealed prior to shipment. A galvanized and painted drain pan shall be provided to cover the entire coil area. The drain pan shall be designed to incorporate sloped gutter for complete condensate removal.

2.4 Remote Outdoor Air Cooled Condenser (DBRC Models)

The remote condenser shall be constructed from sturdy heavy gauge steel sheets with epoxy powder coated oven baked, factory standard beige color to provide a durable finish.

The remote condenser shall include direct driven propeller fans, condenser coil, fan guard, thermally protected rated IP55 motors, integral factory wired and tested control panel. The condenser coil shall be quality construction of seamless copper tube, mechanically bonded to aluminium fins with galvanized coil plates. The coil shall be factory leak and pressure tested to 450psig (31 bar) and the refrigeration system shall be sealed prior to shipment. The evaporator and condenser sections shall ship with a dry-nitrogen holding charge ready for field refrigerant charging.

3 CHILLED WATER (CW) SYSTEMS

3.1 Chilled Water Coil

The evaporator coil shall be of draw through air design for uniform air distribution. The chilled water coil shall be quality construction of seamless copper tube, mechanically bonded to hydrophilic aluminium fins with galvanized coil plates. The coil shall be factory leak and pressure tested to 450psig (31 bar) and sealed prior to shipment. Copper pipe for brazed connection shall be provided as standard. A galvanized and painted drain pan shall be provided to cover the entire coil area. The drain pan shall be designed to incorporate sloped gutter for complete condensate removal.

3.2 Chilled Water Control

The water circuit shall include 3-way forged brass valve and modulating actuators. The microprocessor positions the valve in response to room condition. Cooling capacity shall be controlled by bypassing chilled water around the coil.

4 OPTIONS

4.1 Stainless Steel Drain Pan

A stainless steel condensate drain pan shall be provided for the evaporator/chilled water coil in lieu of standard galvanized and painted drain pan.

4.2 Discharge Plenum (Up-flow Units only)

A discharge plenum box shall be provided for field installation on the top of the up-flow unit. The plenum box shall be 18 inches (457mm) high, insulated and painted to match the color of the indoor unit. The plenum box shall be fitted with double deflection grilles for room discharge of conditioned air.

4.3 Steam Generating Humidifier

Humidifier shall be factory installed inside the unit. The humidification system shall be an electrode cylinder type, complete with fill valve, drain valve, adjustable humidity output and automatic flush cycle activated on demand from the microprocessor control system.

4.4 Hot Gas Bypass (DX Systems only)

The refrigerant circuit(s) shall be provided with a hot gas bypass system for evaporator freeze-protection and capacity modulation during low load conditions.

4.5 Liquid Line Solenoid Valve (DX Systems only)

A factory fitted liquid line solenoid valve shall be provided for each refrigeration circuit as an option.

4.6 Double Skin Panels

All panels shall be provided with galvanized internal skin.

4.7 Insulflex Closed Cell Insulation

All panels shall be single skin and lined with Insulflex Closed Celled insulation (in lieu of fiberglass insulation) with fire resistant of Class O (BS476 Part 6) and Class 1 (BS476 Part 7).

4.8 Hydrophilic or Copper Fin for Condenser Coil (DBRC)

Condenser coils shall be provided with hydrophilic or copper fins in lieu of aluminium.

4.9 Black Color Epoxy Powder Coating for Remote Condenser (DBRC)

The remote condenser DBRC shall be epoxy powder coated oven baked black color paint in lieu of standard beige color.

4.10 Under Floor Water Detector

A remote water leak detector shall be factory provided for field installation. When water leak is detected, cooling mode of the unit is off.

4.11 Smoke Detector

A smoke detector shall be factory supplied at unit's evaporator return air section. The unit shall shut down when smoke alarm is triggered.

4.12 Variable Frequency Drive (VFD) for Evaporator Blower Motor

A variable frequency drive (VFD) for blower motor shall be factory installed to vary the blower motor speed based on room's requirement.

4.13 BMS communication cards

BMS communication card shall be factory installed to enable high level interfacing with BMS system. ModBus, BACnet, LONworks, SNMP communication protocols shall be available as option.

4.14 Electronic Expansion Valve (EEV) for Evaporator Coil

The refrigerant circuit(s) shall be provided with an Electronic Expansion Valve (EEV) for evaporator in lieu of standard Thermal Expansion Valve (TXV) to allow an efficient modulation control of refrigeration and consistent energy saving performances.



Malaysia

Lot 5755-6, Kidamai Industrial Park,
Bukit Angkat,
43000 Kajang,
Selangor Darul Ehsan,
Malaysia

Tel: 603-8924 9000
Fax: 603-8739 5020

China

No. 1 Dunham-Bush Road,
Laishan District,
Yantai,
Shandong Province,
China 264003

Tel: 86-535-658 8999
Fax: 86-535-658 1999

Europe

United Kingdom

8 Downley Road,
Havant, Hampshire,
England PO9 2JD

Tel: 44-23-9247 7700
Fax: 44-23-9245 0396

Middle East & North Africa

United Arab Emirates

Al Murad Tower, Office 506
Al-Barsha 1,
P. O. Box #30922,
Dubai, UAE

Tel: 971-4-451 9899
Fax: 971-4-451 9881

Asia

Singapore

2, Kallang Pudding Road #07-07,
Mactech Industrial Building,
Singapore 349307

Tel: 65-6842 2012
Fax: 65-6842 2013

Africa

South Africa

No. 57 Sovereign Drive
Route 21 Corporate Park
Irene, Pretoria
South Africa

Tel: 27-12-345 4202
Fax: 27-12-345 4203



Please Scan Here

for quick link to Dunham-Bush website

DUNHAM-BUSH

info@dunham-bush.com
www.dunham-bush.com

Products that perform...By people who care