

## Precision Air Conditioning

10, 15, 20kW

Ceiling System

415Vac, 3pH, 50Hz

Next generation Precision Air Conditioning for Mission Critical Facilities Solution



### TYPICAL APPLICATIONS

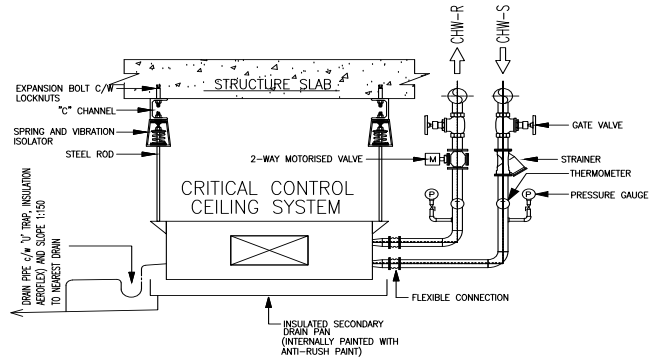
- Data Centers, Server Rooms and Computer Rooms
- Telecommunications and Switch Rooms
- Clean Rooms
- Laboratories
- Utility Rooms
- Military



## Precision Air Conditioning

### Space-Saving Cooling

- Precision cooling and humidity control of your small spaces just got easier, with the new generation of Critical Control precision air cond.
- Installed above a dropped ceiling, saving floorspace for your protected equipment, while still provides the operating features you expect from Critical Control.



### MAIN FEATURES

#### CABINET & FRAME

- Anodized aluminium frame and panels of GI epoxy coated black provide durable finish
- Complete front and side access by means of steel doors with heavy-duty hinges
- **25mm thick rubber insulation** for superior sound attenuation

#### COOLING COIL

- Computer selected coil design increase unit efficiency
- Air draw through the coil at low face velocity providing effective surface exposure with minimum turbulence.

#### FAN SECTION

- AMCA certified, double width double inlet (DWDI) forward curved centrifugal design for quiet operation
- Class F fan motor is mounted on an adjustable slide base.

#### HEATER

- Corrosion resistance (**Aluminum**) type
- 3 stages were used to maintain the environment precisely.

#### COMPRESSOR (DX)

- Extremely quiet, energy efficient scroll compressor

#### 2-WAY MODULATING VALVE (CHW)

- Valve provide regulation according to customer load requirement

#### ELECTRICAL & CONTROL PANEL

- Cable segregation and each component are protected by individual MCB
- Compartment contains the contactor, miniature circuit breaker, transformer and terminal isolator.

#### FILTER

- Surface pleated disposable type filter rated for MERV8 efficiency to ASHRAE52.2 standard (EU4) are in place to provide clean air / minimum dust environment

### CONDENSER (DX)

- Axial fans design in accordance to the needs of high airflow, low noise requirement.
- **Series 5000 aluminium panels** for corrossions proved

### REMOTE MONITORING & CONTROL SYSTEM

Variety of solutions, such as MODBUS RS485, LONWORKS FTT10, BACNET GATEWAY, TREND, WEBGATE, SNMP, DLL, SMS, Direct Modem, is available to meet client needs.

### OPTIONS & ACCESSORIES

- STEAM IMMERSSED HUMIDIFIER
- PILLOW BLOCK BEARING BLOWER ASSEMBLY
- VIBRATION ISOLATOR AT THE REFRIGERANT DISCHARGE LINE
- HOT GAS REHEAT (DX SYSTEMS)
- 3-WAY MODULATING VALVE
- INVERTER COMPRESSOR
- ELECTRONIC EXPANSION VALVE (EEV)
- VARIABLE SPEED DRIVE (VSD)
- ELECTRONICALLY COMMUTATED (EC) FAN
- F8 AIR FILTER
- DOUBLE SKINNED & PU INSULATION
- FLOOR WATER DETECTION
- SUPPLY AIR PLENUM BOX
- COLOUR TOUCH SCREEN DISPLAY
- ADJUSTABLE FLOOR STAND
- HOT GAS BYPASS
- EFF1 MOTOR

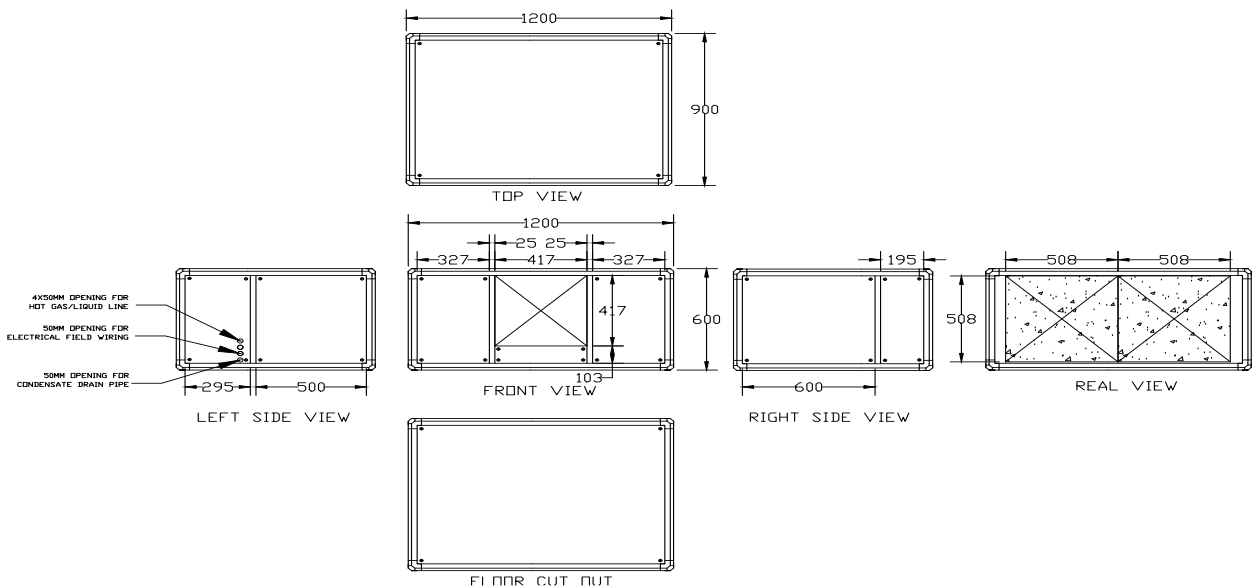
### ENGINEERING-TO-SUIT (CUSTOMIZATION)

Experienced application specialists and engineers are just a phone call away and because we are strictly a precision air conditioning company, we know how quickly and precisely walk you through any questions you might have.

## Precision Air Conditioning

### TECHNICAL SPECIFICATION – Chilled Water Cooled (CHW)

MODEL	CCCH	010	015	020
<b>Cooling Capacity</b> 24degC 50%RH				
Total Capacity	kW	10.6	14.9	17.5
Sensible Capacity	kW	9.5	13.1	15.8
<b>Physical</b>				
Enclosure	mm	1,200W x 900D x 600H		
Weight	kg	210	220	230
<b>Fan</b>				
Number of fans	qty	1	1	1
Air flow	m <sup>3</sup> /h	2,550	3,400	4,250
External Static Pressure	Pa	75		
<b>2 Way Modulating Valve</b>				
Valve Size (OD)	mm	25		
<b>Filter</b>				
Number	qty	2		
Dimensions (each)	mm	508 x 508		
Depth (each)	mm	25		
<b>Reheat</b>				
Number of stages	qty	3		
Total power	kW	6		
<b>Noise Level</b>				
Noise data	dB(A)	56	57	57
<b>Connection</b>				
Connection-Discharge/Liquid pipe	mm	22/16		
Condensate drain	mm	21		
<b>Electrical Data</b>				
RLA (amp)		14.4	16.4	19



## Precision Air Conditioning

### TECHNICAL SPECIFICATION – Direct Expansion (DX)

MODEL	CCAH	010	015	020
<b>Cooling Capacity</b> 24degC 50%RH				
Total Capacity	kW	10.2	14.6	17.1
Sensible Capacity	kW	9	13.1	15.8
<b>Physical</b>				
Enclosure	mm	1,200W x 900D x 600H		
Weight	kg	250	260	270
<b>Fan</b>				
Number of fans	qty	1	1	1
Air flow	m <sup>3</sup> /h	2,550	3,400	4,250
External Static Pressure	Pa	75		
<b>Compressor</b>				
Type		scroll		
Quantity	qty	1		
Number of circuits	qty	1		
<b>Filter</b>				
Number	qty	2		
Dimensions (each)	mm	508 x 508		
Depth (each)	mm	25		
<b>Reheat</b>				
Number of stages	qty	3		
Total power	kW	6		
<b>Noise Level</b>				
Noise data	dB(A)	56	57	57
<b>Connection</b>				
Connection-Discharge/Liquid pipe	mm	22/16		
Condensate drain	mm	21		
<b>Condenser</b>				
Quantity	35degC	1		
Model		CCRC04	CCRC06	CCRC06
<b>Electrical Data</b>				
RLA (amp)		16.4	18.4	21

- The technical specification may change or upgrade without prior notice
- Sound pressure level at 5m in free field, upflow ducted / down flow raised floor
- Capacity can be tested with additional cost in the factory test chamber

#### AUTHORIZED DISTRIBUTOR :

#### CRITICAL CONTROL SDN BHD

##### Kulim, Kedah, Malaysia

Lot 1466, Kawasan Perindustrian Sungai Karangan  
Mukim Pekan Sungai Karangan  
Daerah Kulim, Kedah Darul Aman

##### Lunas, Kedah, Malaysia

571 & 572, Jalan Lobak 13  
Taman Lobak  
09600 Lunas, Kedah Darul Aman